



Help Guide

---

## Getting Started with AmiBroker

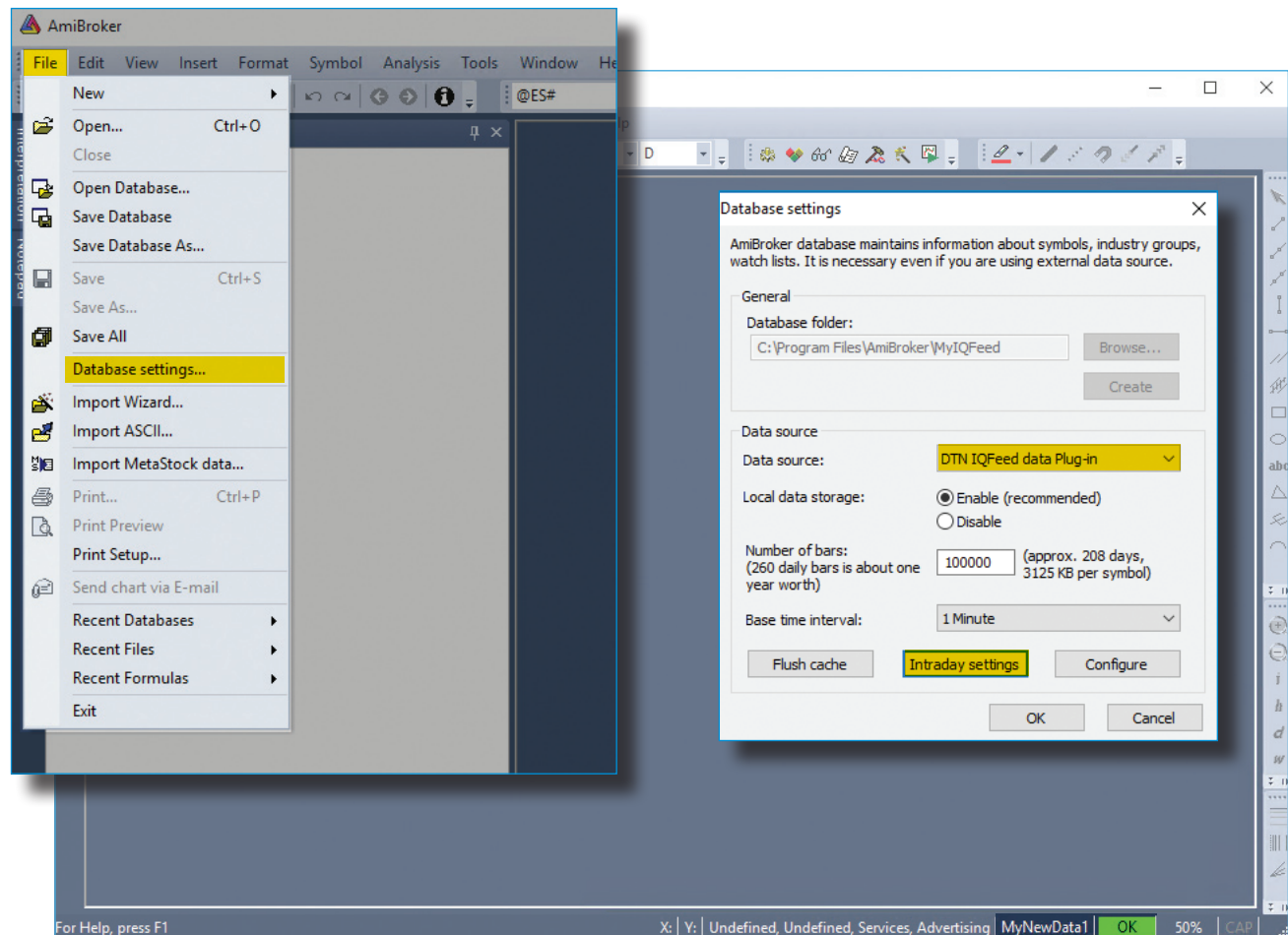
v051319

## Connecting IQFeed with AmiBroker

Please note that before you can run IQFeed with AmiBroker, you will need to install the IQFeed client software. You can get the latest version from [www.iqfeed.net](http://www.iqfeed.net). Once you have both IQFeed and AmiBroker installed, you can connect them using the following steps:

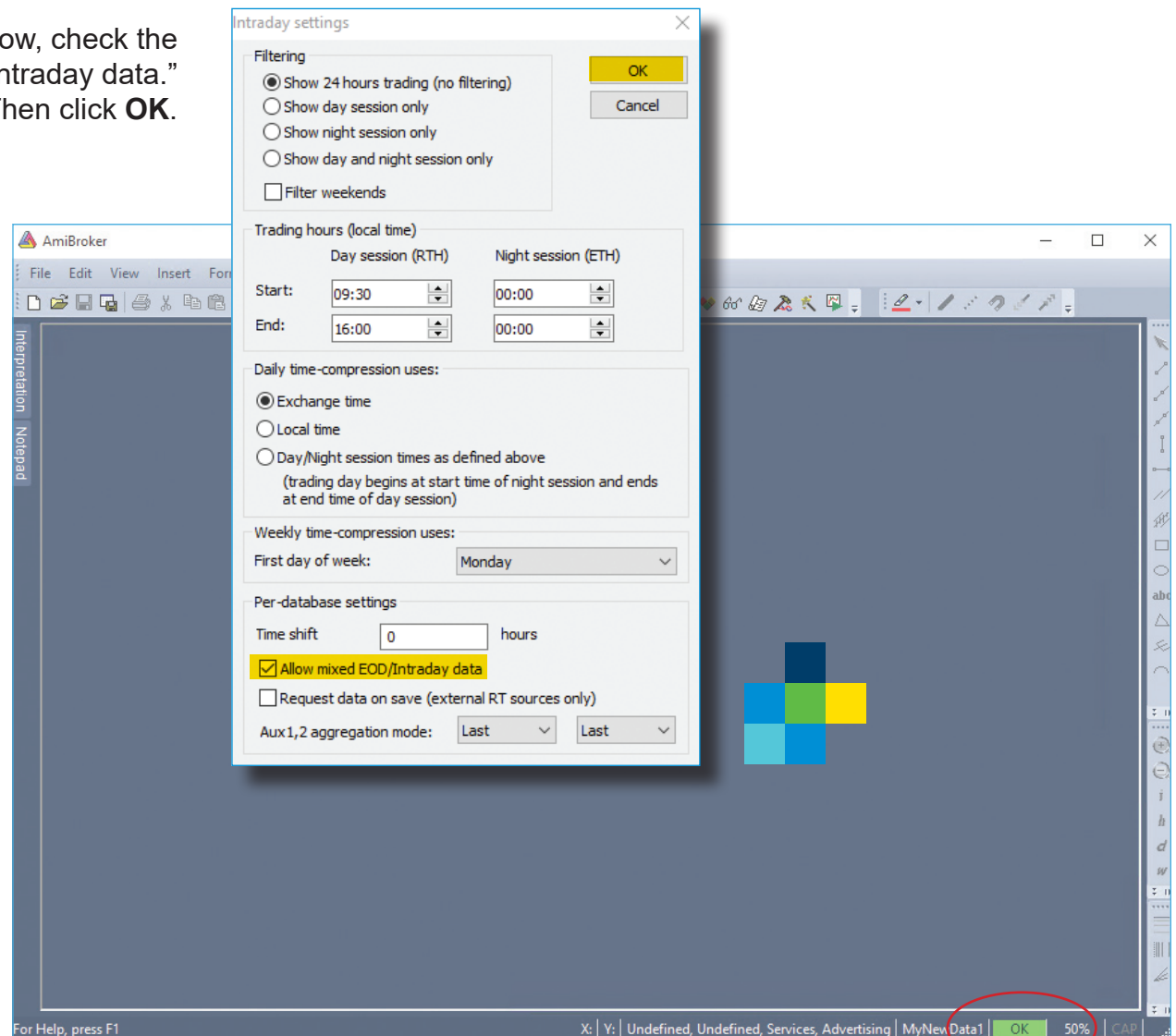
**1** Open AmiBroker and click **File** at the top of the AmiBroker control center disp. Click **Database settings...** on the dropdown panel.

**2** On the **Database settings** window, select “DTN IQFeed data Plug-in” as the **Data source**. Select the **Number of bars** that you would like to see. Choose a **Base time interval** (Tick, Minute, 5-Minute, End-Of-Day, etc.). Then, click **Intraday Settings**.



**3** On the **Intraday Settings** window, check the box for “Allow mixed EOD/Intraday data.” Then click **OK**.

**4** You can check your IQFeed connection status in the lower right corner of the AmiBroker control center display. If you see **OK** in a green box, you are connected.





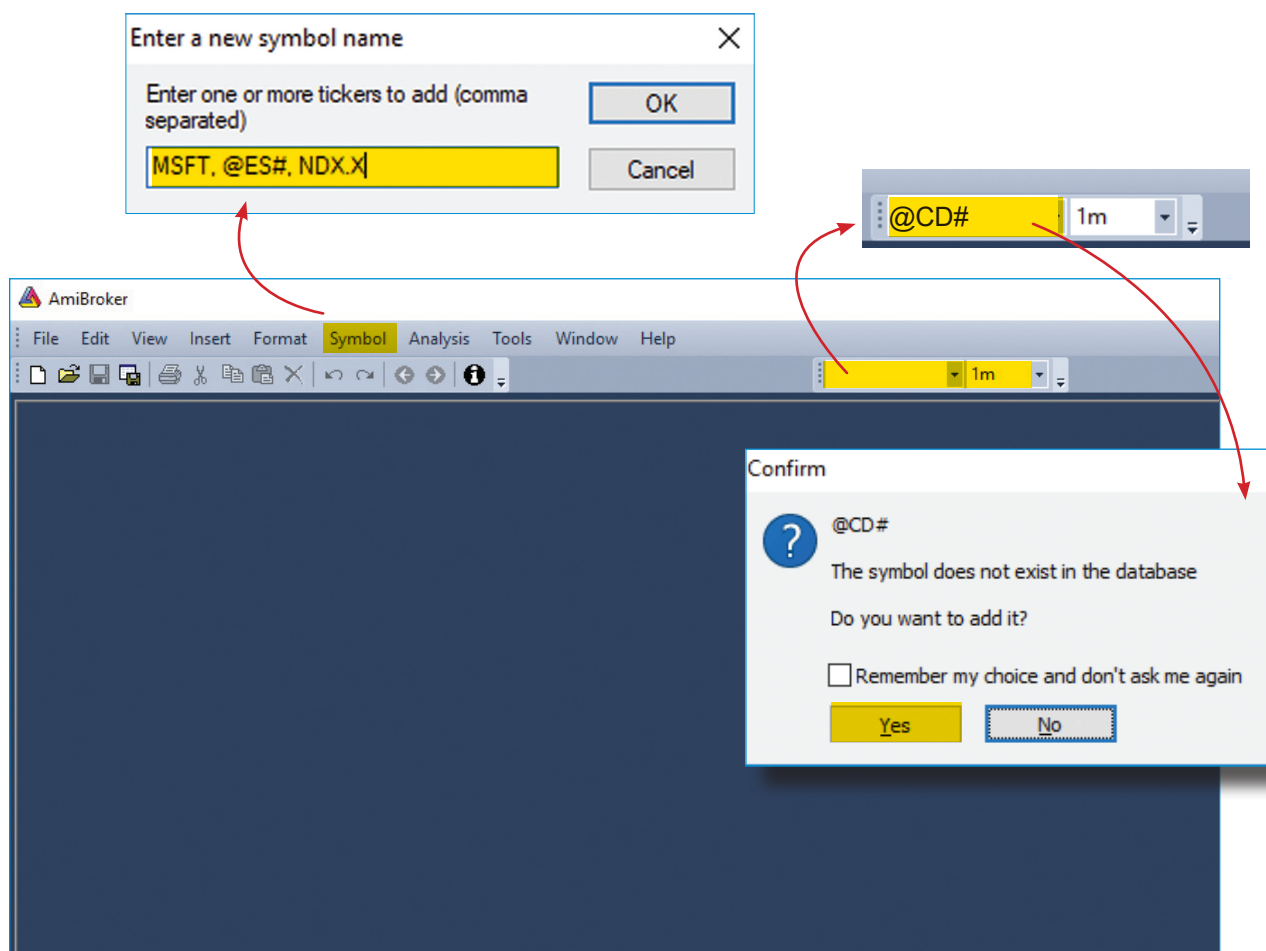
## Adding Symbols in AmiBroker

After connecting IQFeed with AmiBroker, you will need to add IQFeed symbols to the AmiBroker database. There are a couple easy ways to do that in AmiBroker.

In AmiBroker, click the [Symbol](#) link at the top of the control center display. Click on **New**. You will be presented with a field where you can type one or more IQFeed symbol names\* (separated by commas). When you have finished, click **OK**.

Alternatively, you can simply type a symbol into the symbol field located at the top of the AmiBroker control center window. If the symbol has never previously been added to the AmiBroker database, a message box will appear asking you if you want to add it. Click **Yes**.

*\* A symbol in IQFeed may differ from an exchange's or other data provider's. If you need help with identifying an IQFeed symbol, please try using our [Symbol Lookup](#) or contacting our IQFeed support staff (800-779-7299).*



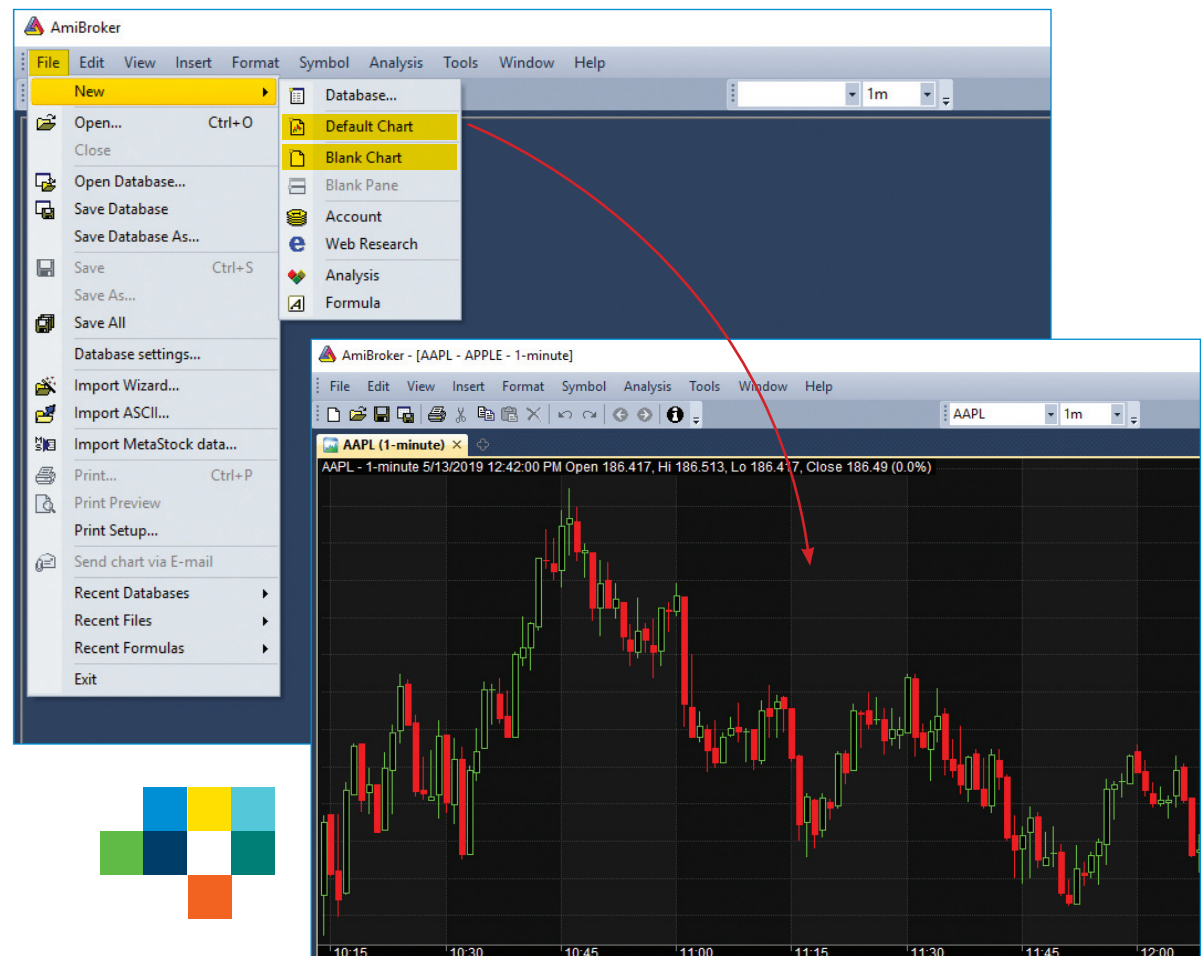


## Creating a Chart

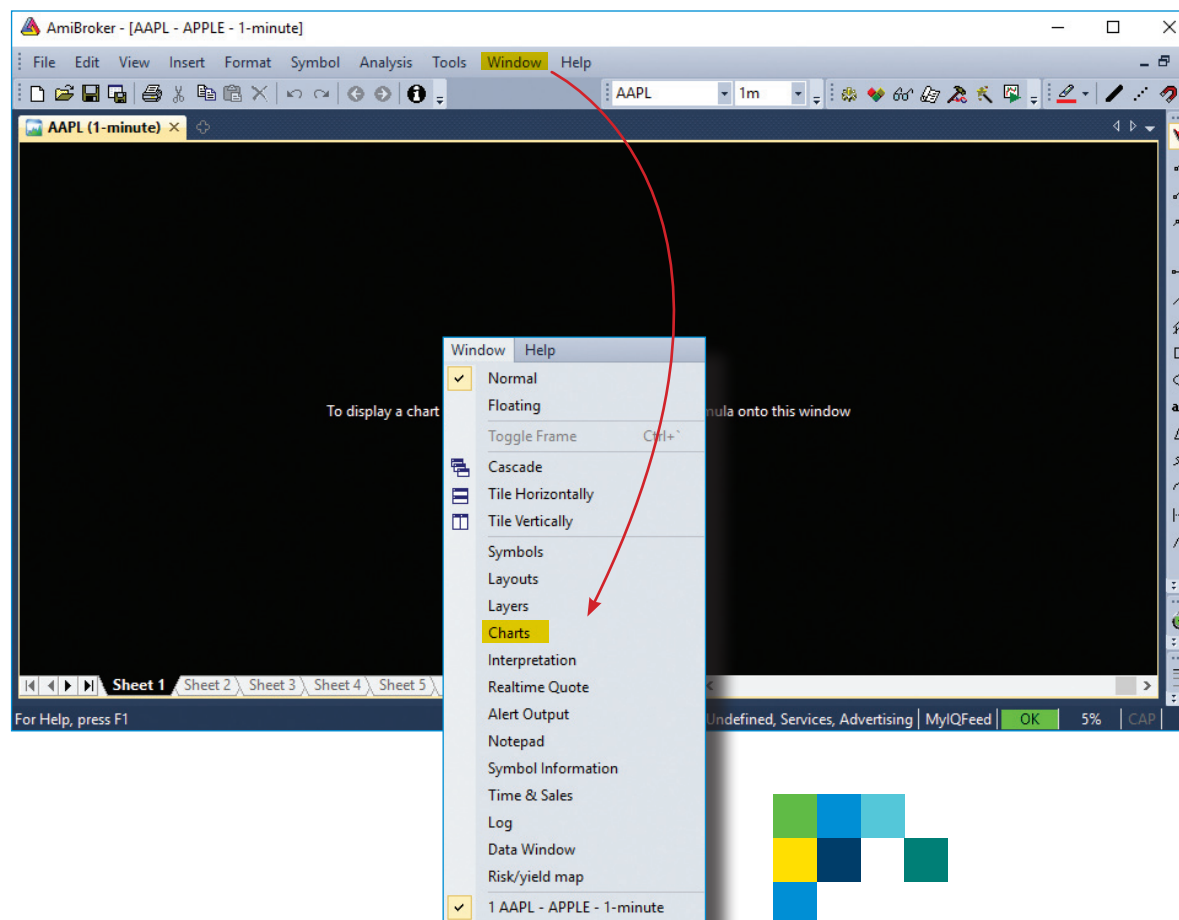
After connecting IQFeed with Amibroker and adding symbols to the AmiBroker database, you're ready to view a chart.

- 1 Click the **File** link at the top of the AmiBroker control center display. Select **New** from the dropdown window.

Selecting **Default Chart** will get you started with a basic price chart (or whatever chart settings you may have previously selected). However, select **Blank Chart** to start with a clean slate and get more specific in the type of chart you want to see.

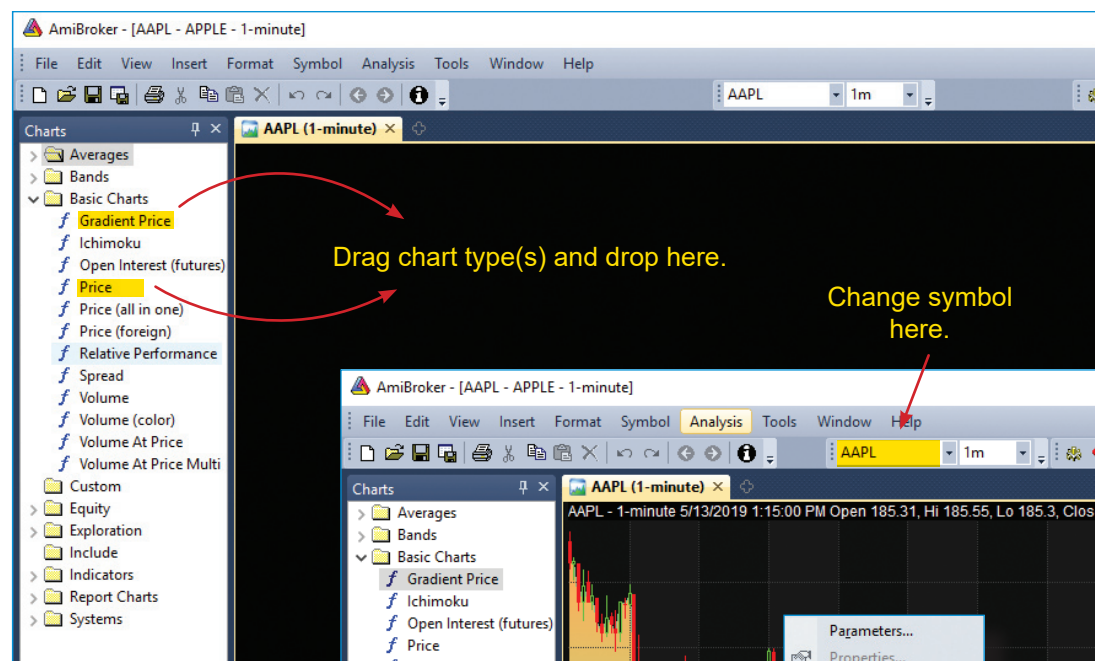


2 If you start with a **Blank Chart**, you will then need to select **Window** from the top of the AmiBroker control center display and pick **Charts** from the dropdown window.



3 A **Charts** option bar will appear on the left of the AmiBroker control center display. Simply use your mouse to grab the type of chart you wish to see and drag it over into the black chart window on the right. A chart should appear.

This concludes our **IQFeed Help Guide** for getting started with AmiBroker. Please refer all of your more advanced software-related questions to Amibroker support.



Change symbol here.

Note: you can change to a different symbol at any time by typing the symbol into the symbol field at the top of the Amibroker control center display.

Note: If you wish to remove an indicator from your chart, right click on the chart and select **Delete Indicator** from the dropdown window.

