



Help Guide

Getting Started with Ensign Software

v053119

Connecting IQFeed with Ensign Software

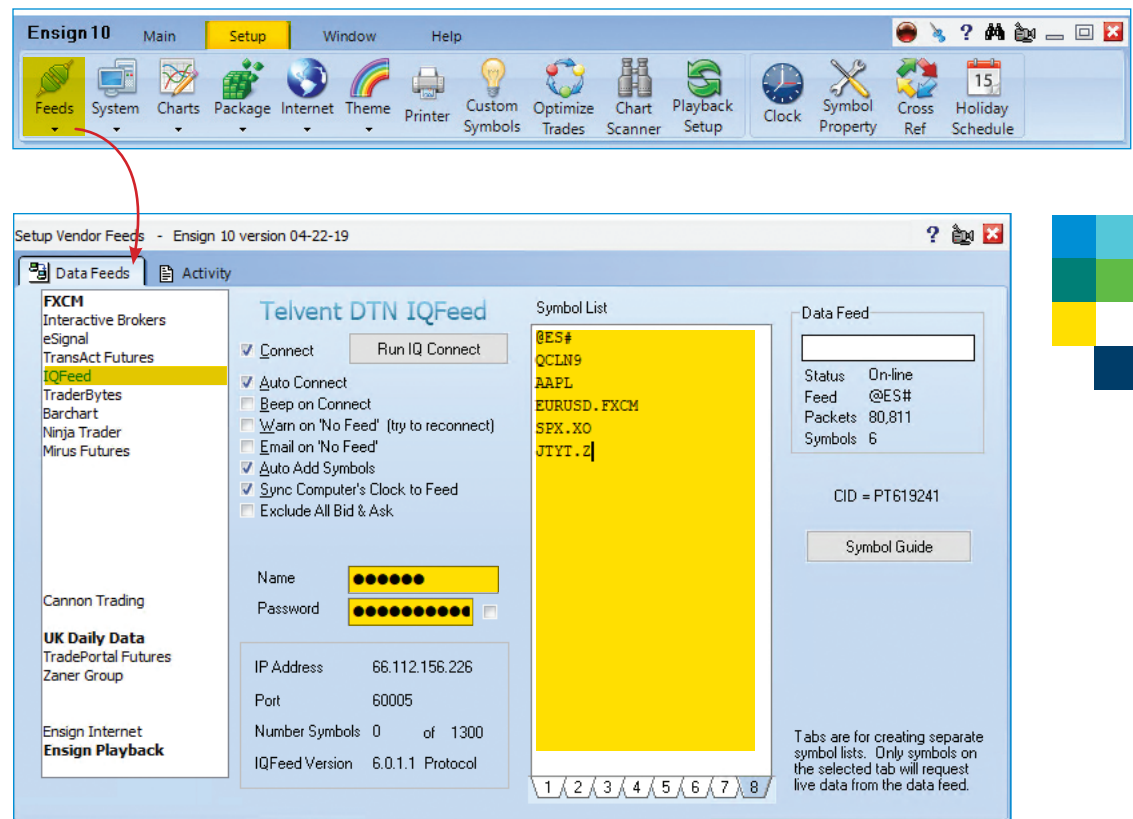
Please note that before you can run IQFeed with Ensign Software (Ensign 10), you will need to install the IQFeed client software. You can get the latest version [here](#). Once you have both IQFeed and Ensign Software installed, you can connect them using the following steps.

1 Open Ensign Software and select the **Setup** tab at the top of the menu display. Select **Feeds** from the selection panel.

2 On the **Setup Vendor Feeds** window, select "IQFeed" from the list of **Data Feeds**. Enter your IQFeed username and password in the **Name** and **Password** fields. Type the symbols* that you want to see under **Symbol List**.

** A symbol in IQFeed may differ from the one the exchange provides or what another data provider uses. If you need help with identifying an IQFeed symbol, please try using our [Symbol Lookup](#) or contacting our IQFeed support staff (800-779-7299).*

3 The setup between IQFeed and Ensign Software should now be complete. You can close the **Setup Vendor Feeds** window now or leave it open to adjust your **Symbol List**.

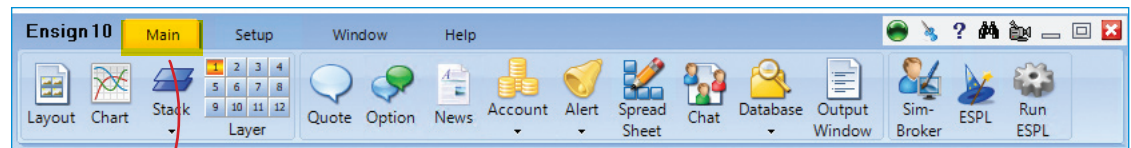




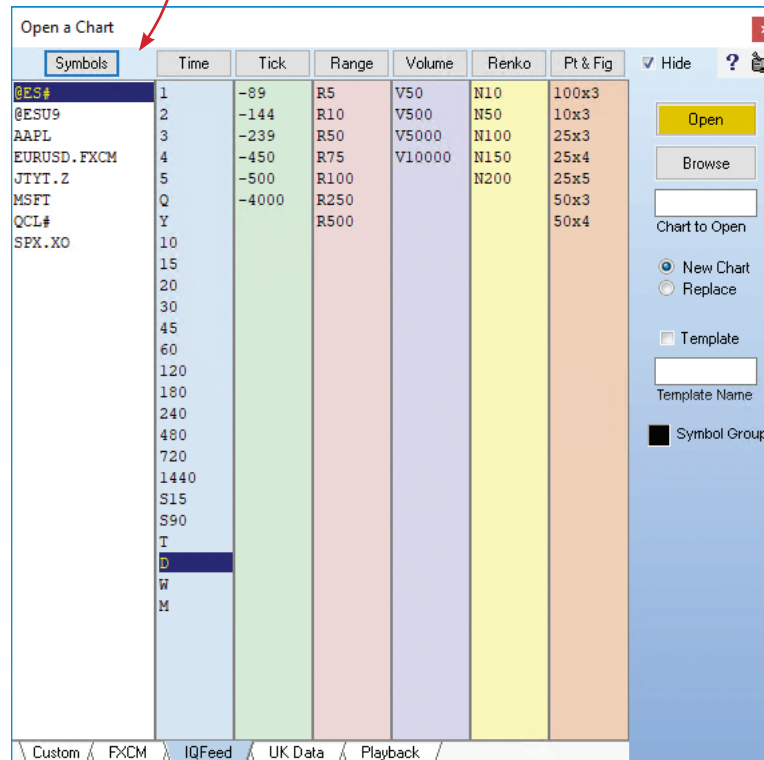
Viewing a Chart in Ensign Software


The following steps will help you open and edit a chart in Ensign Software.


- 1 To open a chart, select the **Main** tab at the top of the menu display. Select **Chart** from the selection panel.




- 2 On the **Open a Chart** window, select a symbol under **Symbols**. Under **Time**, select the time interval for your bars, or use any of the other fields (**Tick**, **Range**, **Volume**, **Renko**, **Pt & Fig**) to define your chart. Click **Open** to view the chart.



3 When your chart appears, you can edit its properties by selecting the **Properties** icon () from the top or by right-clicking on the chart and selecting **Properties** from the dropdown window. Alternatively, you can double-click on the chart or use the shortcut command **Ctrl-P**.

If you want to add a study, click the **Studies** icon () to view a list of available studies. Or, right-click on the chart and select **Studies** from the dropdown window.

To remove a study, click the **Objects** icon () or right-click on the chart and select **Objects**. Select the study, then press the **Delete** button.

This concludes our **IQFeed Help Guide** for getting started with Ensign Software.

For help with its many other tools and features, please contact Ensign Software support.

