



Help Guide

Getting Started with Investor/RT

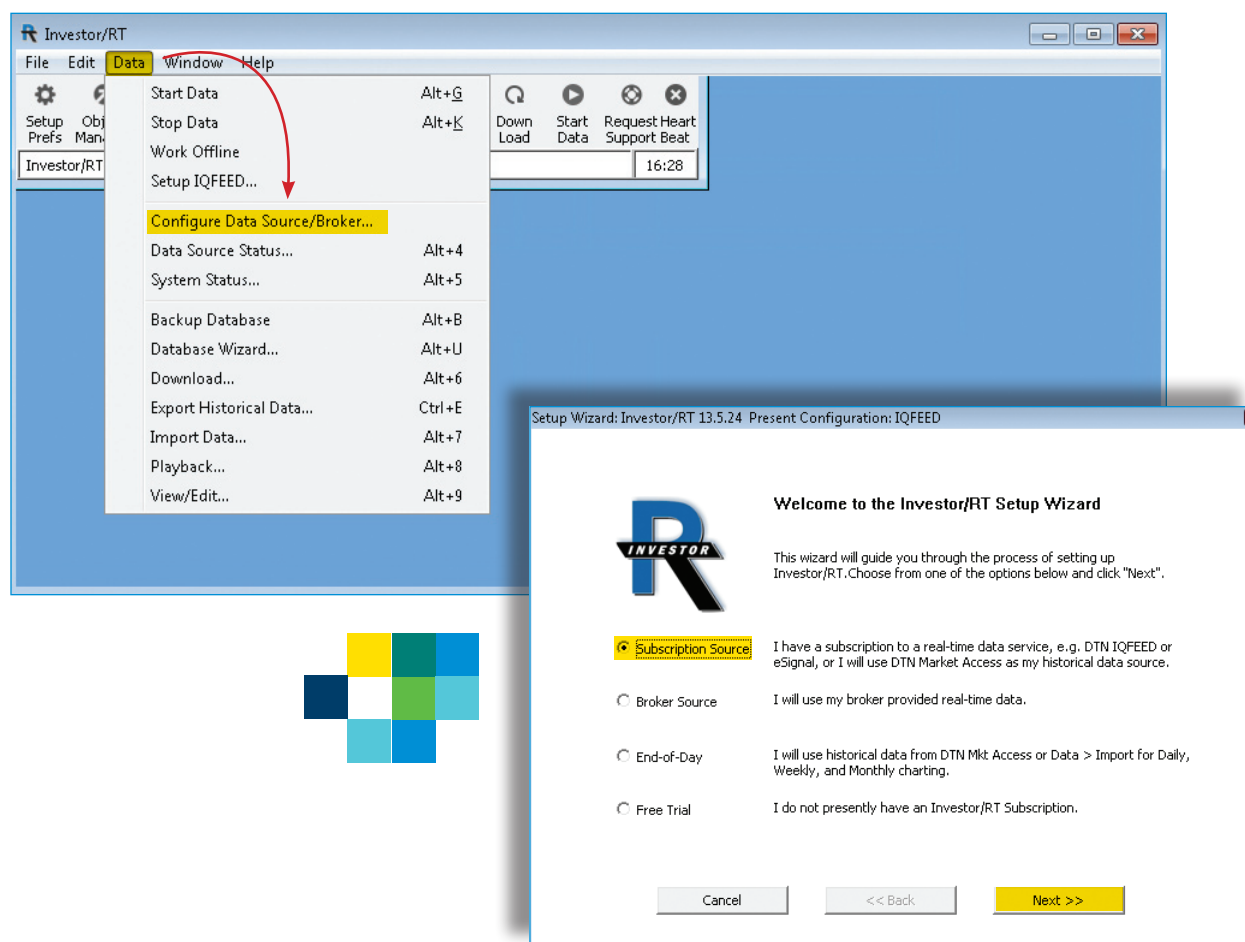
v052119

Connecting IQFeed with Investor/RT

Please note that before you can run IQFeed with Investor/RT, you will need to install the IQFeed client software. You can get the latest version [here](#). Once you have both IQFeed and Investor/RT installed, you can connect them using the following steps.

1 Open Investor/RT and click **Data** at the top of the main display window. Select **Configure Data Source/Broker...** on the dropdown panel.


2 On the **Investor/RT Setup Wizard**, click the radial button for **Subscription Source**. Then, click **Next**.





- 3 On the **Subscription Data Source Selection** window, click the radial button for "DTN IQFeed." Enter your IQFeed **Login ID** and **Password**. Click on **Next >>** to continue.

Setup Wizard: Investor/RT 13.5.24 Present Configuration: IQFEED



Subscription Data Source Selection

Investor/RT supports real-time market data from DTN IQFEED and eSignal. The software may also be used with historical data from DTN Market Access. To setup Investor/RT for use with broker data, click "Back".

☒ DTN IQFeed
 ☐ DTN Historical

☐ eSignal

Login ID:


Password or Pin:

☒ Create a sample quote page of IQFEED ticker symbols

Enter your IQFEED credentials and click "Next".

- 4 On the **Brokerage Destination Selection** window, select your Broker from the dropdown or check the box to "Use Built-in Trading Simulator." Click on **Next >>** to finish the data feed setup.

Setup Wizard: Investor/RT 13.5.24 Present Configuration: IQFEED



Brokerage Destination Selection

You can use the Investor/RT trading simulator or setup Investor/RT for trading with a brokerage account.

☒ Use Built-in Trading Simulator

Select Broker:

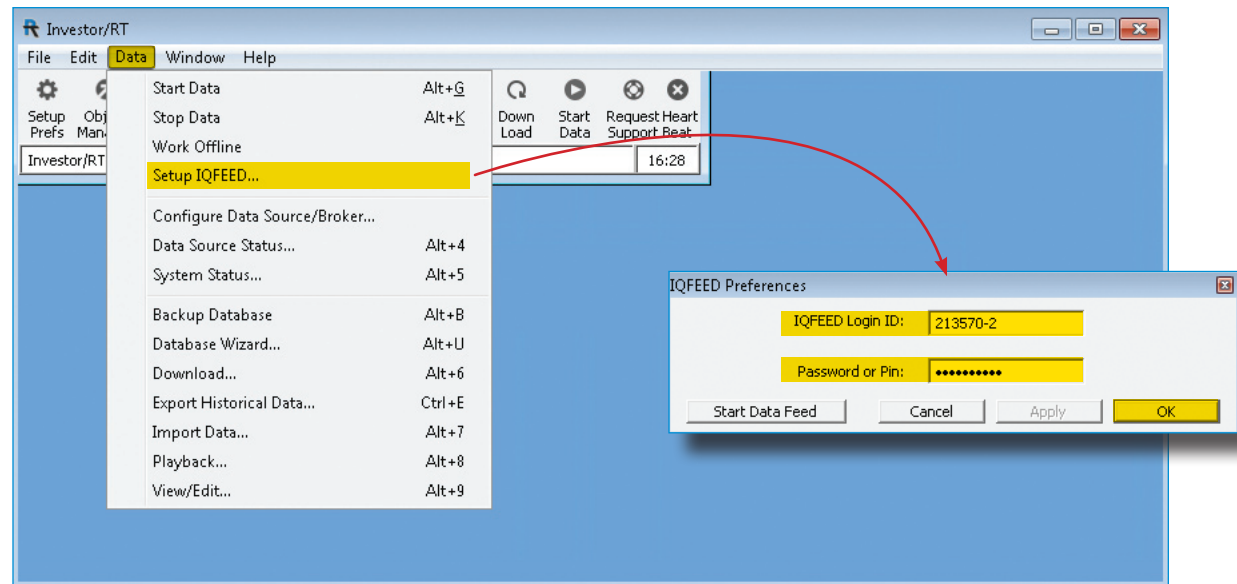


Reconnecting to Investor/RT After a Password Change

If your IQFeed login credentials (username and/or password) change, you need to update them in Investor/RT or you will receive a message every time you attempt to launch Investor/RT informing you that your IQFeed credentials are incorrect. Here's how to update them.

1 Select **Data** from the Investor/RT main display, and click on **Setup IQFeed** on the dropdown window.

2 On the **IQFEED Preferences** window, enter your new login credentials for IQFeed. Click **Apply**, then **OK** to finish.



An alternative way to change your IQFeed login credentials is to click on the **Setup Prefs** cogwheel (⚙) on the menu bar at the top of the main display. Then, on the **Preferences** window, select **Data > Data Feed**, to enter new login ID and/or password information.

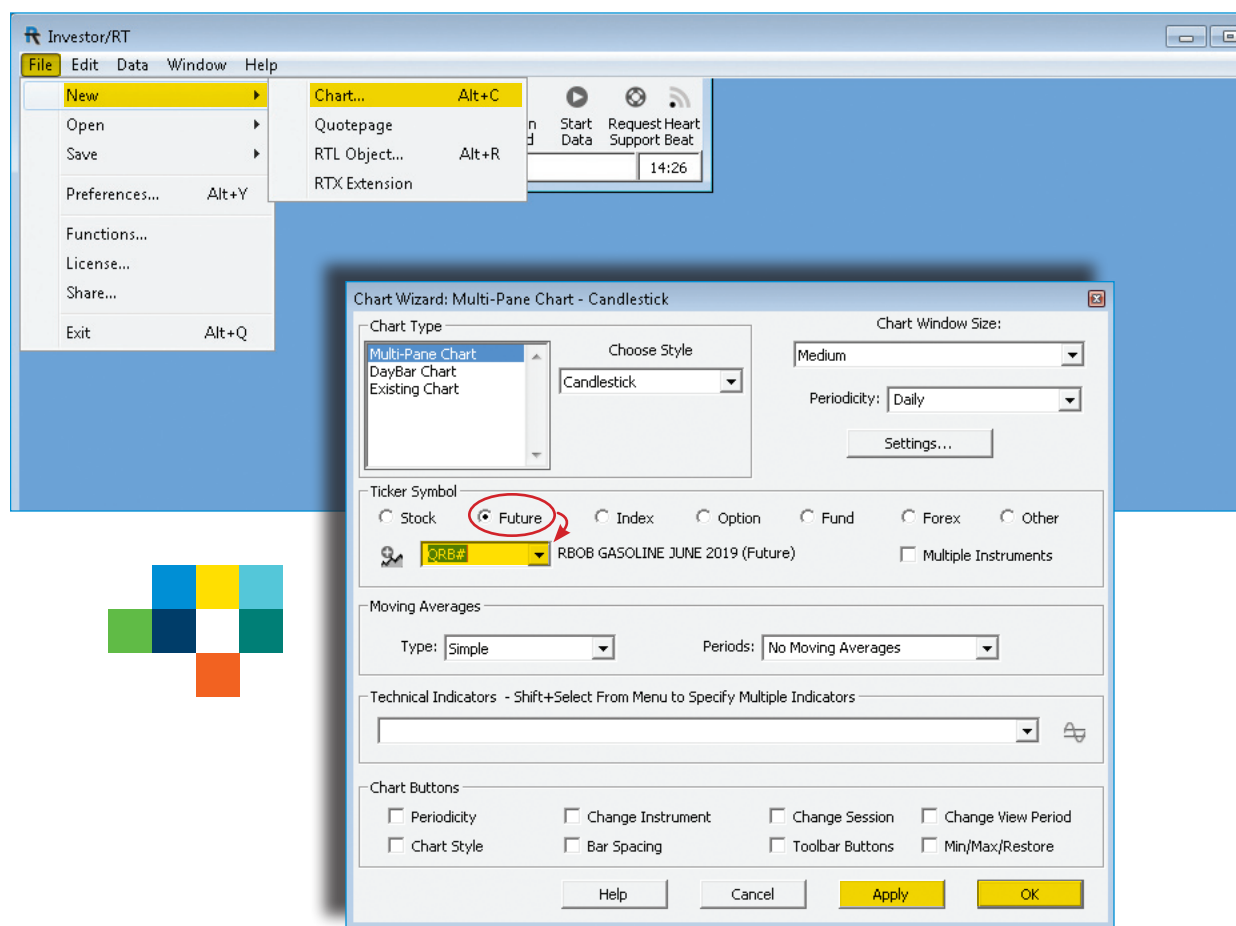
Viewing a Chart in Investor/RT

After connecting IQFeed with Investor/RT, you can create a chart by following a few basic steps. For help with more advanced charting options or with anything else related to your software, please contact Investor/RT support or refer to any of their official help documents.

1 To open a chart, select **File** from the Investor/RT main display. Select **New**, and click on **Chart...**

2 Using the **Chart Wizard**, type an IQFeed symbol* into the **Ticker Symbol** field (be sure to choose a category, e.g. Stock, Future, Forex). You can also make other chart adjustments on this window, including type, style and periodicity (tick, minute, daily, etc.). Once you are satisfied with your choices, click either **Apply** (this leaves the **Chart Wizard** open) or **OK** (this closes the **Chart Wizard**) to view the chart.

** A symbol in IQFeed may differ from an exchange's or other data provider's. If you need help with identifying an IQFeed symbol, please try using our **Symbol Lookup** or contacting our IQFeed support staff (800-779-7299).*



3 When your chart appears, you can edit it by right-clicking on any of the lines or bars. On the **Update** window, you can select a different symbol (from any that have previously been added to the Investor/RT database). You can also change the **Chart Style**, **Periodicity**, and **Candle Colors**.

Once you are satisfied with your choices, click either **Apply** or **OK** to view the updated chart.



This concludes our **IQFeed Help Guide** for getting started with Investor/RT. Please refer all of your more advanced software-related questions to Investor/RT support.

