



Help Guide

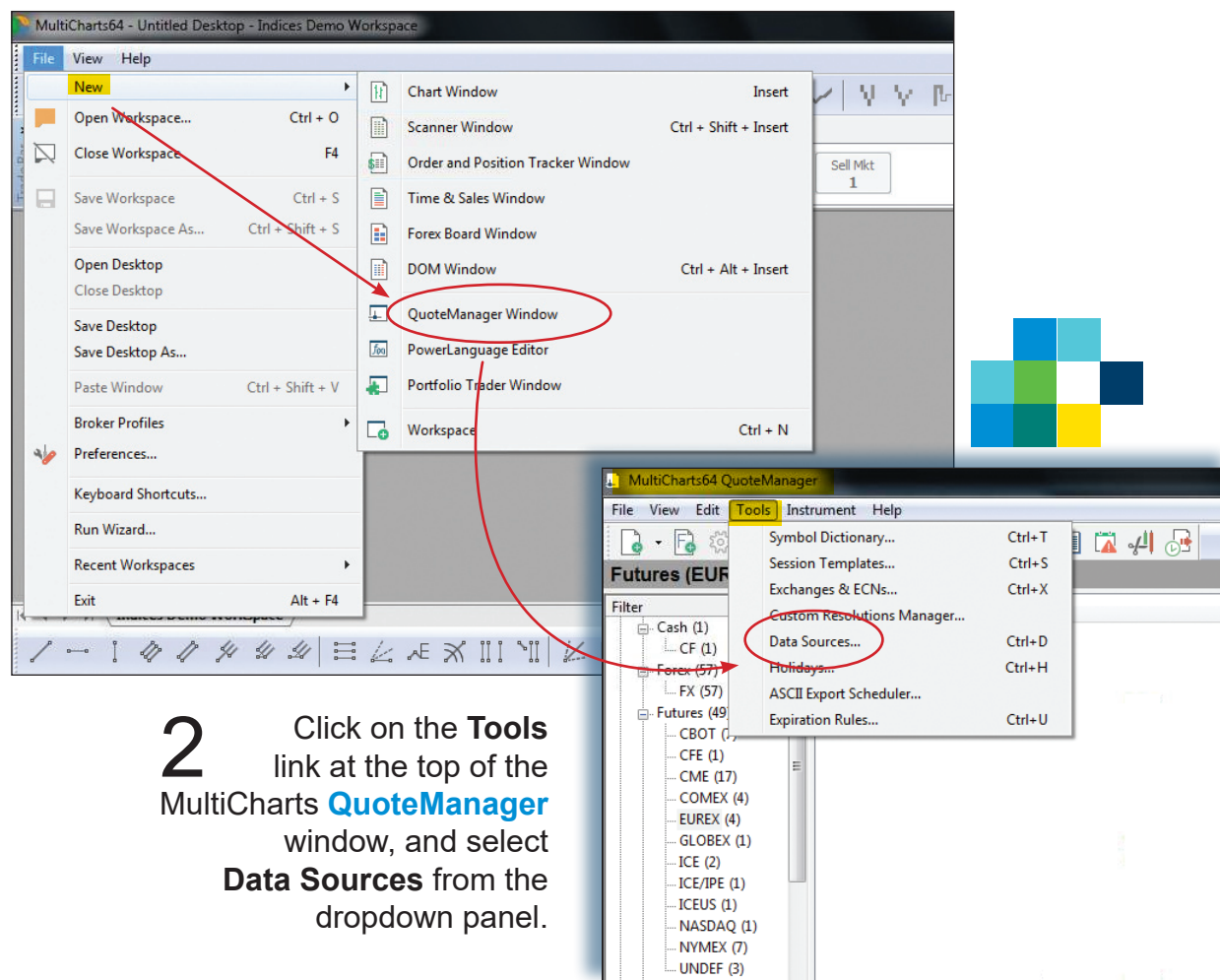
Getting Started with MultiCharts

v042219

Connecting IQFeed with MultiCharts

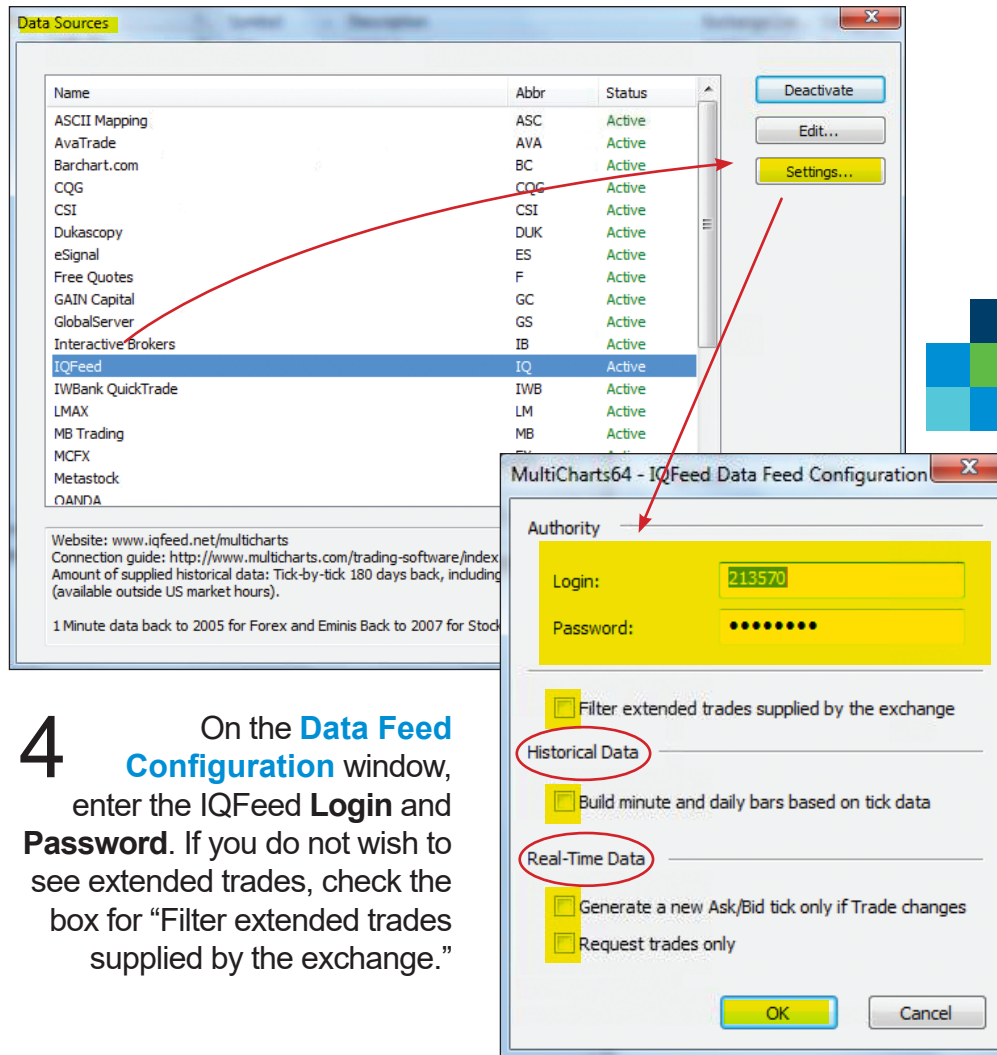
Please note that before you can run IQFeed with MultiCharts, you will need to install the IQFeed client software. You can get the latest version from www.iqfeed.net. Once you have both IQFeed and MultiCharts installed, you can connect them using the following steps:

- 1 Open MultiCharts' **QuoteManager**, either by double clicking on the **QuoteManager** icon on your desktop or by selecting **File > New > QuoteManager Window** in MultiCharts.



- 2 Click on the **Tools** link at the top of the MultiCharts **QuoteManager** window, and select **Data Sources** from the dropdown panel.

3 On the **Data Sources** window, select IQFeed from the list of data sources, and click on **Settings**.



4 On the **Data Feed Configuration** window, enter the IQFeed **Login** and **Password**. If you do not wish to see extended trades, check the box for “Filter extended trades supplied by the exchange.”

a) Under **Historical Data**: do not check the box for “Build minute and daily bars based on tick data.” If you do, you will only see a max of 180 days of minute or daily bars.

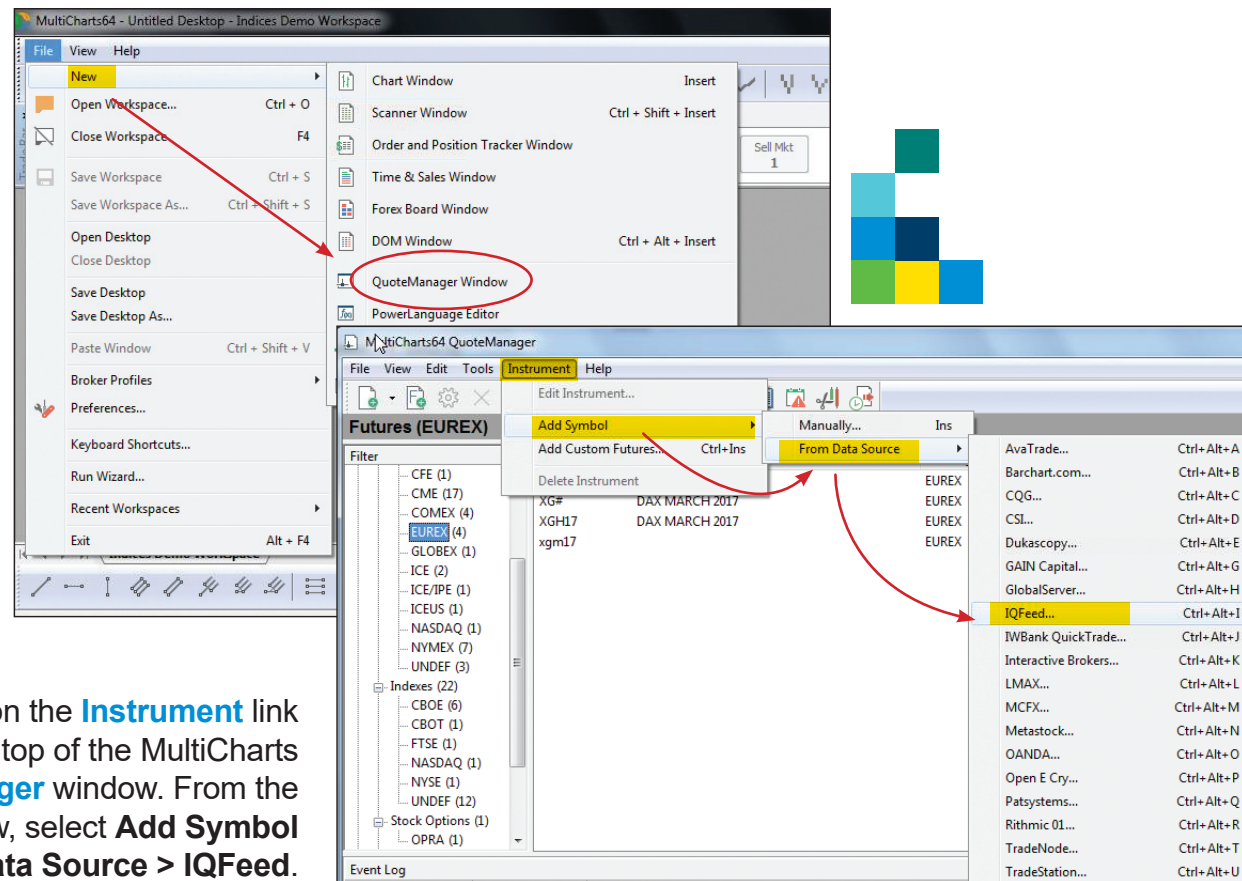
b) Under **Real-Time Data**: do not check either box for “Generate a new Ask/Bid tick if Trade changes” or for “Request trades only.”

c) Click **OK**. IQFeed should now be connected with MultiCharts.

Adding Recognized IQFeed Symbols (From Data Source)

MultiCharts recognizes IQFeed symbology of many symbols, although you may need to add them via the MultiCharts **QuoteManager** utility. You can also manually add symbols that are not currently recognized by MultiCharts (e.g. DTN custom market indicators or new futures).

1 Open Multicharts' **QuoteManager**, either by double clicking on the **QuoteManager** icon on your desktop or by selecting **File > New > QuoteManager Window** in MultiCharts.



2 Click on the **Instrument** link at the top of the MultiCharts **QuoteManager** window. From the drop-down window, select **Add Symbol > From Data Source > IQFeed**.



3 On the **Insert Symbols into Portfolio** window, select one of the tabs at the top (**Stock**, **Index**, **Future**, etc) for the type of symbol you want to add.

a) Enter a symbol* (or a description of a symbol) in the **Symbol** field.

** Note that you can enter just a portion of the symbol to return a list of all related symbols.*

b) From the **Search options** dropdown window, you can choose to search either by “Symbol” or “Description.” Type what you are looking for into the **Symbol/Description** field, then press the **Lookup** button.

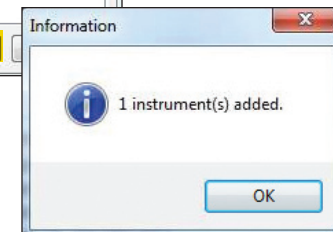
Symbol	Description	Expiration	Exchange
QCL#	CRUDE OIL MAY 2018	20180531	NYMEX
QCLF19	CRUDE OIL JANUARY 2019	20190131	NYMEX
QCLF20	CRUDE OIL JANUARY 2020	20200131	NYMEX
QCLF21	CRUDE OIL JANUARY 2021	20210131	NYMEX
QCLF22	CRUDE OIL JANUARY 2022	20220131	NYMEX
QCLF23	CRUDE OIL JANUARY 2023	20230131	NYMEX
QCLF24	CRUDE OIL JANUARY 2024	20240131	NYMEX
QCLF25	CRUDE OIL JANUARY 2025	20250131	NYMEX
QCLF26	CRUDE OIL JANUARY 2026	20260131	NYMEX

Total: 114 Selected: 0

Add

c) If you know the symbol's exchange, you can select it from the **Exchange** dropdown. Otherwise, select “All Exchanges.”

d) Select the symbol that you want to add from the list at the bottom of the window. Then click on **Add**. An **Information** window should appear, letting you know that your symbol has been added to the MultiCharts database.

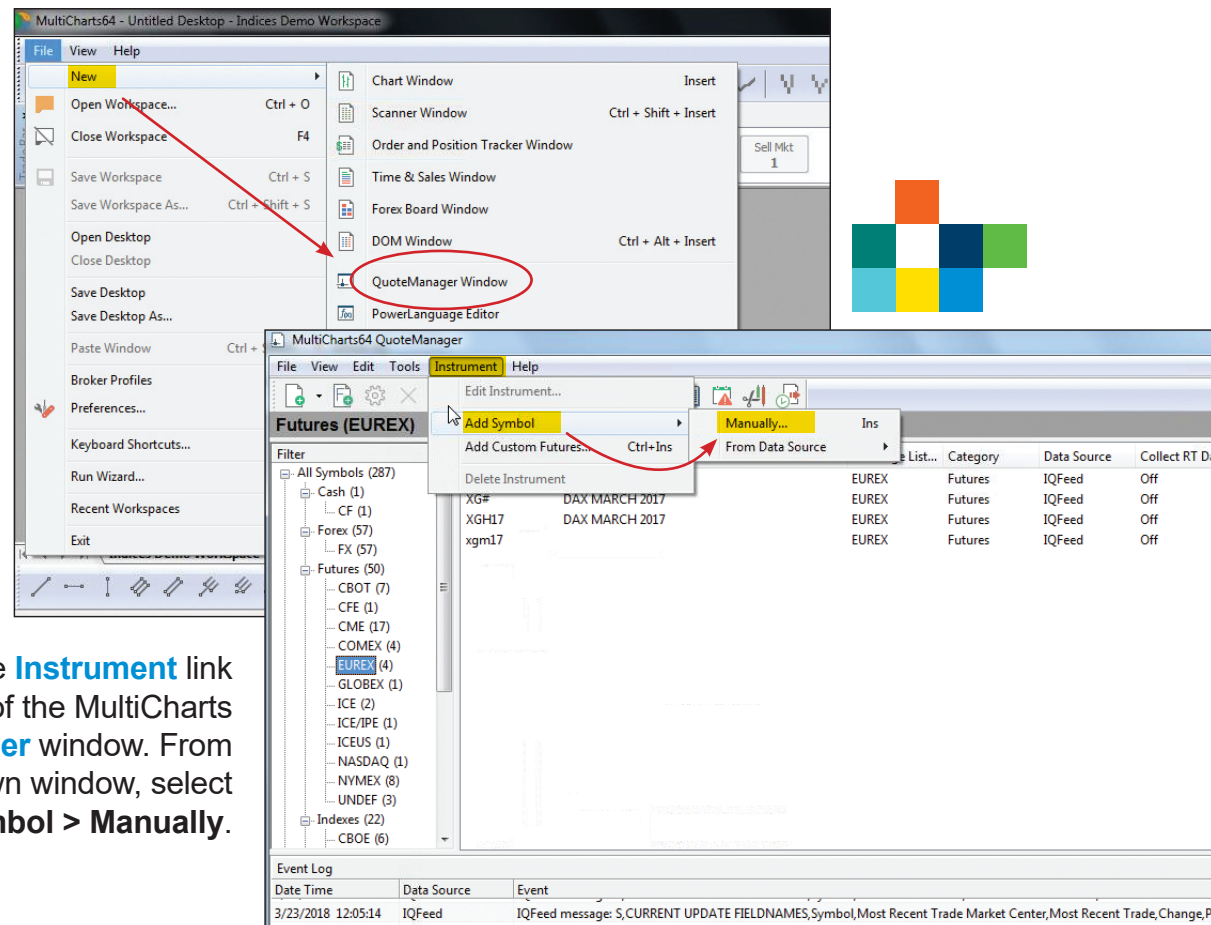


Adding Unrecognized IQFeed Symbols (Manually)

If MultiCharts does not recognize a particular IQFeed symbol (e.g. a DTN custom market indicator or a new added symbol to an exchange), you can still add it via the MultiCharts **QuoteManager** utility.

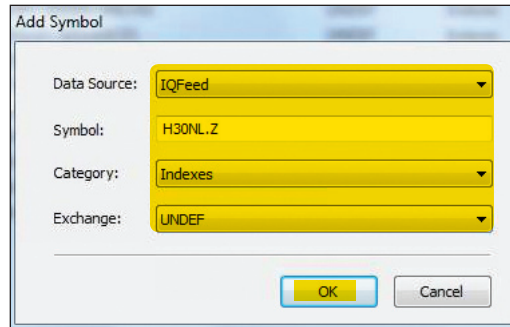
1 Open Multicharts' **QuoteManager**, either by double clicking on the **QuoteManager** icon on your desktop or by selecting **File > New > QuoteManager Window** in MultiCharts.

2 Click on the **Instrument** link at the top of the MultiCharts **QuoteManager** window. From the drop-down window, select **Add Symbol > Manually**.



- 3 On the **Add Symbol** window, select your **Data Source** ("IQFeed"), the **Category** (Futures, Stocks, Indexes, etc), and the **Exchange**[†] from the respective dropdown windows. Type the symbol that you want to add into the open **Symbol** field. Then press **OK**.

[†] If you are adding a DTN calculated symbol, choose "UNDEF" as the **Exchange**.

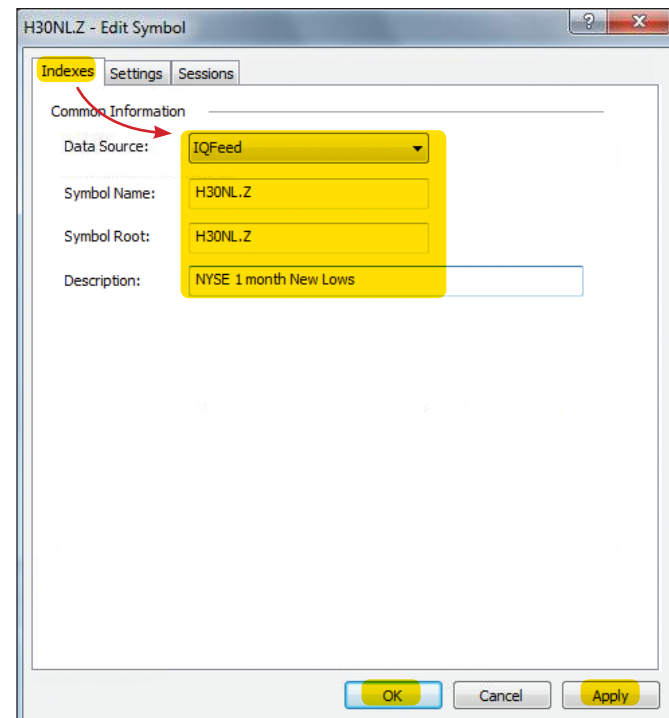


The 'Add Symbol' dialog box has four dropdown menus: 'Data Source' (set to IQFeed), 'Symbol' (set to H30NL.Z), 'Category' (set to Indexes), and 'Exchange' (set to UNDEF). There are 'OK' and 'Cancel' buttons at the bottom right.

- 4 On the **Edit Symbol** window, there are tabs for **Indexes**, **Settings**, and **Sessions**. Under **Indexes**, you can see basic information about the newly added symbol. Under **Settings**, you have the ability to change the symbol's exchange or to use custom settings* (Price Scale, Min. Movement, Big Point Value, Currency). Under **Sessions**, you can change the exchange session* times for the symbol.

If you make any changes on the **Edit Symbol** window, click on **Apply**, followed by **OK**, to add the symbol to the Multicharts database. If you do not make any changes, simply click **OK**.

* Note that the default settings in MultiCharts are usually correct. However, if you feel you need to change the settings and/or session times, you may need to refer to the exchange for assistance.



The 'H30NL.Z - Edit Symbol' dialog box has three tabs: 'Indexes' (selected), 'Settings', and 'Sessions'. Under the 'Indexes' tab, there is a 'Common Information' section with four fields: 'Data Source' (dropdown set to IQFeed), 'Symbol Name' (text field with H30NL.Z), 'Symbol Root' (text field with H30NL.Z), and 'Description' (text field with NYSE 1 month New Lows). There are 'OK', 'Cancel', and 'Apply' buttons at the bottom right.