



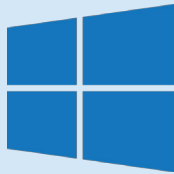
Help Guide

Getting Started with MotiveWave

v50219

Connecting IQFeed with MotiveWave: PC or Mac?

Please note that before you can run IQFeed with MotiveWave on either a PC or a Mac, you will need to install the IQFeed client software, which you can get at www.iqfeed.net (click **here** to go directly to the download page).



PC/IQFeed Setup Assistance: For help with installing the IQFeed client on a PC, click **here**.



Mac/IQFeed Setup Assistance: For help with installing the IQFeed client on a Mac, click **here**.

Once both IQFeed and MotiveWave are properly installed, the following steps will guide you through the process of connecting to either a PC or Mac.

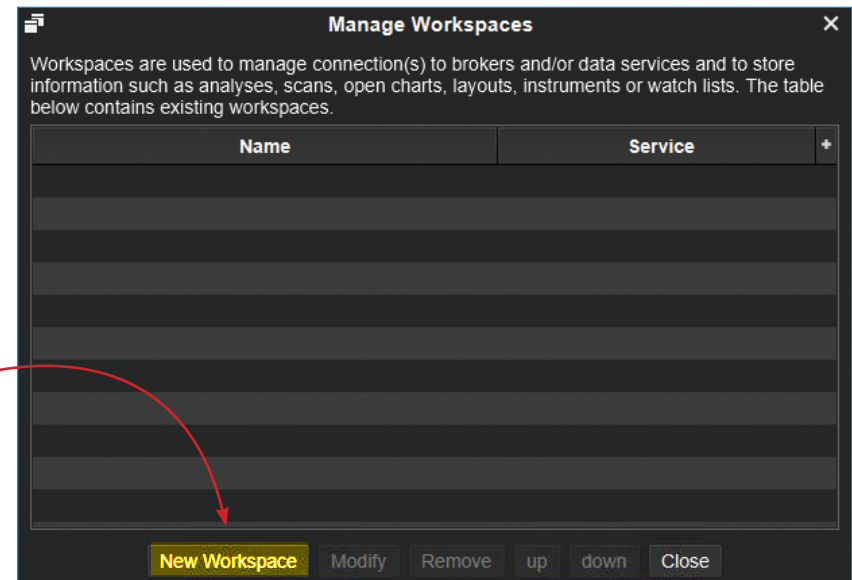
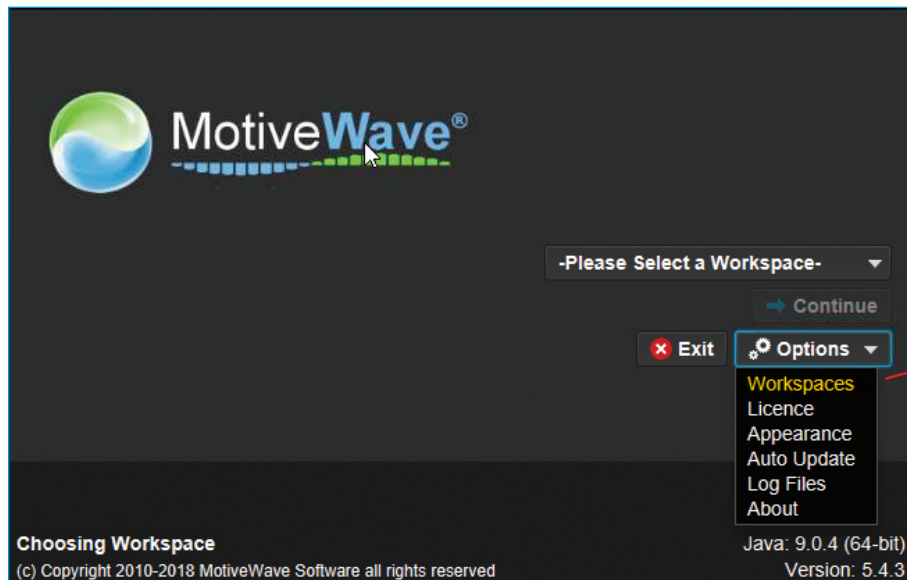


Creating a MotiveWave Workspace for IQFeed

Your IQFeed connection in MotiveWave is managed through a workspace. Each workspace is a separate instance of MotiveWave and contains its own local database. All data, settings, and analyses are separate between each workspace (with the exception of themes and historical data).

- 1 Open MotiveWave on your PC or Mac, and click on **Options** on the launch window. Select **Workspaces** from the dropdown menu.

- 2 On the **Manage Workspaces** window, select **New Workspace**.

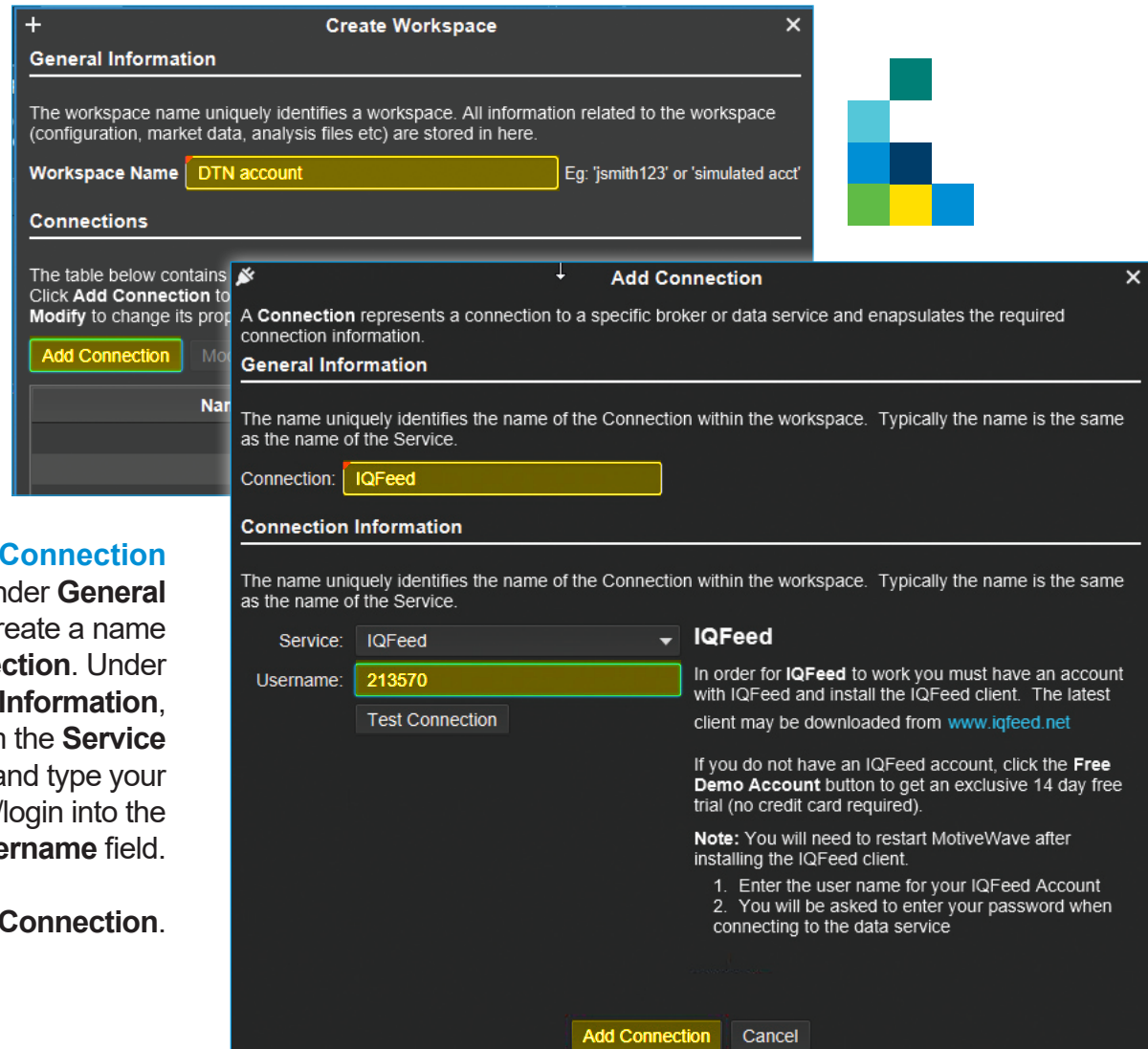


3 On the **Create Workspace** window, under **General Information**, enter a name (e.g. "DTN Account") for your new **Workspace Name**.

Under **Connections**, click on **Add Connection**.

4 On the **Add Connection** window, under **General Information**, create a name for your **Connection**. Under **Connection Information**, select IQFeed from the **Service** dropdown window and type your IQFeed username/login into the **Username** field.

Click on **Add Connection**.



Create Workspace

General Information

The workspace name uniquely identifies a workspace. All information related to the workspace (configuration, market data, analysis files etc) are stored in here.

Workspace Name: Eg: 'jsmith123' or 'simulated acct'

Connections

The table below contains... Click **Add Connection** to... **Add Connection**

Add Connection

A **Connection** represents a connection to a specific broker or data service and encapsulates the required connection information.

General Information

The name uniquely identifies the name of the Connection within the workspace. Typically the name is the same as the name of the Service.

Connection:

Connection Information

The name uniquely identifies the name of the Connection within the workspace. Typically the name is the same as the name of the Service.

Service: **IQFeed**

Username: In order for **IQFeed** to work you must have an account with IQFeed and install the IQFeed client. The latest client may be downloaded from www.iqfeed.net

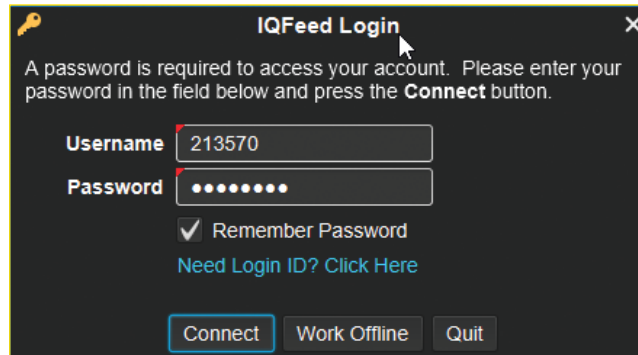
If you do not have an IQFeed account, click the **Free Demo Account** button to get an exclusive 14 day free trial (no credit card required).

Note: You will need to restart MotiveWave after installing the IQFeed client.

1. Enter the user name for your IQFeed Account
2. You will be asked to enter your password when connecting to the data service

Add Connection **Cancel**

- 5 On the **IQFeed Login**, enter your IQFeed password into the **Password** field. Check the box for **Remember Password** if you want MotiveWave to automatically connect you with IQFeed whenever you use this newly created workspace.



IQFeed Login

A password is required to access your account. Please enter your password in the field below and press the **Connect** button.

Username 213570

Password ••••••••

☒ Remember Password

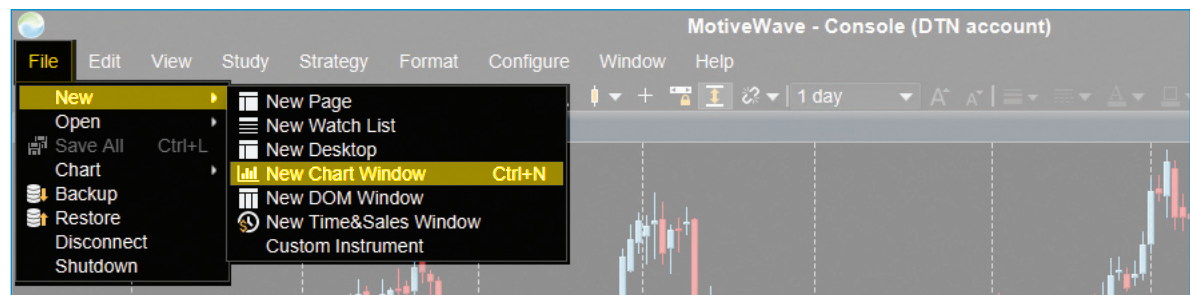
[Need Login ID? Click Here](#)

Connect **Work Offline** **Quit**

Viewing a Chart in MotiveWave

Here is a basic guide to viewing a chart in MotiveWave. For more detailed info, or for help with the many other functions of MotiveWave, please contact MotiveWave support.

- 1 In MotiveWave, click on the **File** tab. Then select **New**, followed by **New Chart Window**. Alternatively, you can press Ctrl+N to create a new chart.



- 2 With the new chart window open, select a symbol from the dropdown list at the top left.

Minute/Daily Bar Chart: Select a minute or daily time interval from the dropdown menu at the top (further to the right).

Tick Chart: To convert your chart to a tick chart, right click in the chart window and select **Tick Interval** from the dropdown window.

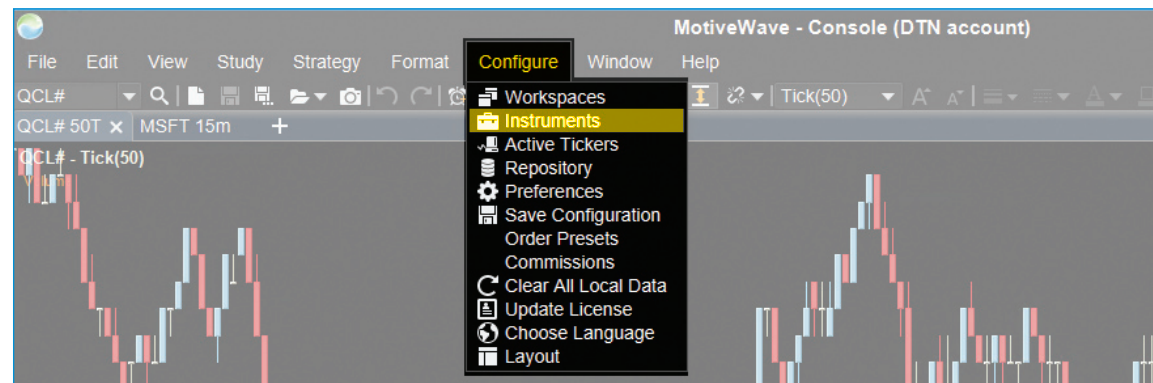
(Note: to add additional symbols to MotiveWave, see the next section, "Adding an IQFeed Symbol in MotiveWave.")



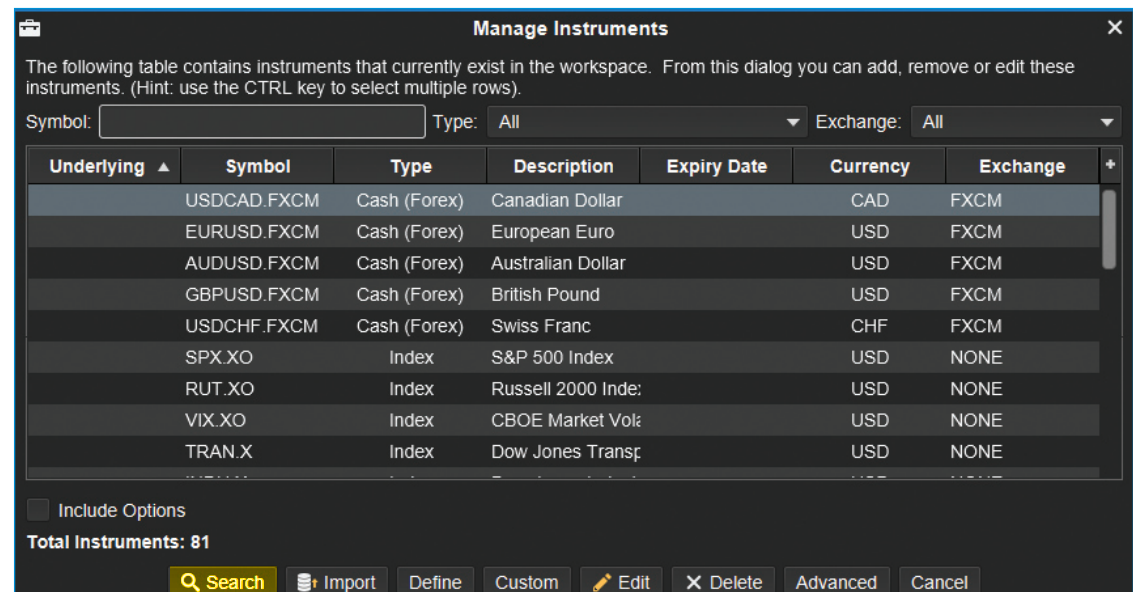
Adding an IQFeed Symbol in MotiveWave

Since MotiveWave can work with multiple data providers, you will likely have to add some IQFeed symbols to your local MotiveWave database. The following steps will walk you through this easy process.

- 1 In MotiveWave, click on the **Configure** tab. Then select **Instruments**.



- 2 On the **Manage Instruments** window, you will see a list of symbols that are a part of your current IQFeed workspace. To add a new symbol, click on the **Search** button at the bottom of the window.



3 On the **Search for Instrument** window, select the **IQFeed** tab at the top (it should be selected by default).

Type an IQFeed symbol into the **Symbol/Underlying** field. Or, if you don't know the IQFeed symbol, you can search by **Description**. To help narrow the search, also select the type of symbol (e.g. stock, future, index, etc.) from the **Type** dropdown. Then click on the **Search** button.

Your symbol search will show all related results. Select the one that you would like to add to your workspace of your local database, and click on **OK**.

The symbol should now be accessible on a chart or other MotiveWave application.

Search for Instrument

IQFeed Local Database

Enter the symbol and the type of instrument you are looking for or enter part of the description. Optionally select the type of instrument or the exchange on which the instrument is trading. Click **Search** to begin the search.

Underlying: @ES Type: Future Exchange: All

Description: Search

Underlying	Symbol	Expiry Date	Currency	Exchange	Description
@ES#	@ES#		USD	CMEMINI	E-MINI S&P 500 DE
@ESH19	@ESH19		USD	CMEMINI	E-MINI S&P 500 MA
@ESK#	@ESK#		USD	CME_GBX	EURO FX/SWEDISH
@ESKH19	@ESKH19		USD	CME_GBX	EURO FX/SWEDISH
@ESKH20	@ESKH20		USD	CME_GBX	EURO FX/SWEDISH
@ESKM19	@ESKM19		USD	CME_GBX	EURO FX/SWEDISH
@ESKU19	@ESKU19		USD	CME_GBX	EURO FX/SWEDISH
@ESKZ18	@ESKZ18		USD	CME_GBX	EURO FX/SWEDISH
@ESKZ19	@ESKZ19		USD	CME_GBX	EURO FX/SWEDISH
@ESM19	@ESM19		USD	CMEMINI	E-MINI S&P 500 JUI
@ESQ#	@ESQ#		USD	CMEMINI	TACO ON E-MINI S
@ESQH19	@ESQH19		USD	CMEMINI	TACO ON E-MINI S
@ESQM19	@ESQM19		USD	CMEMINI	TACO ON E-MINI S
@ESQU19	@ESQU19		USD	CMEMINI	TACO ON E-MINI S
@ESQZ18	@ESQZ18		USD	CMEMINI	TACO ON E-MINI S

OK Cancel