



Help Guide

Getting Started with NinjaTrader 7

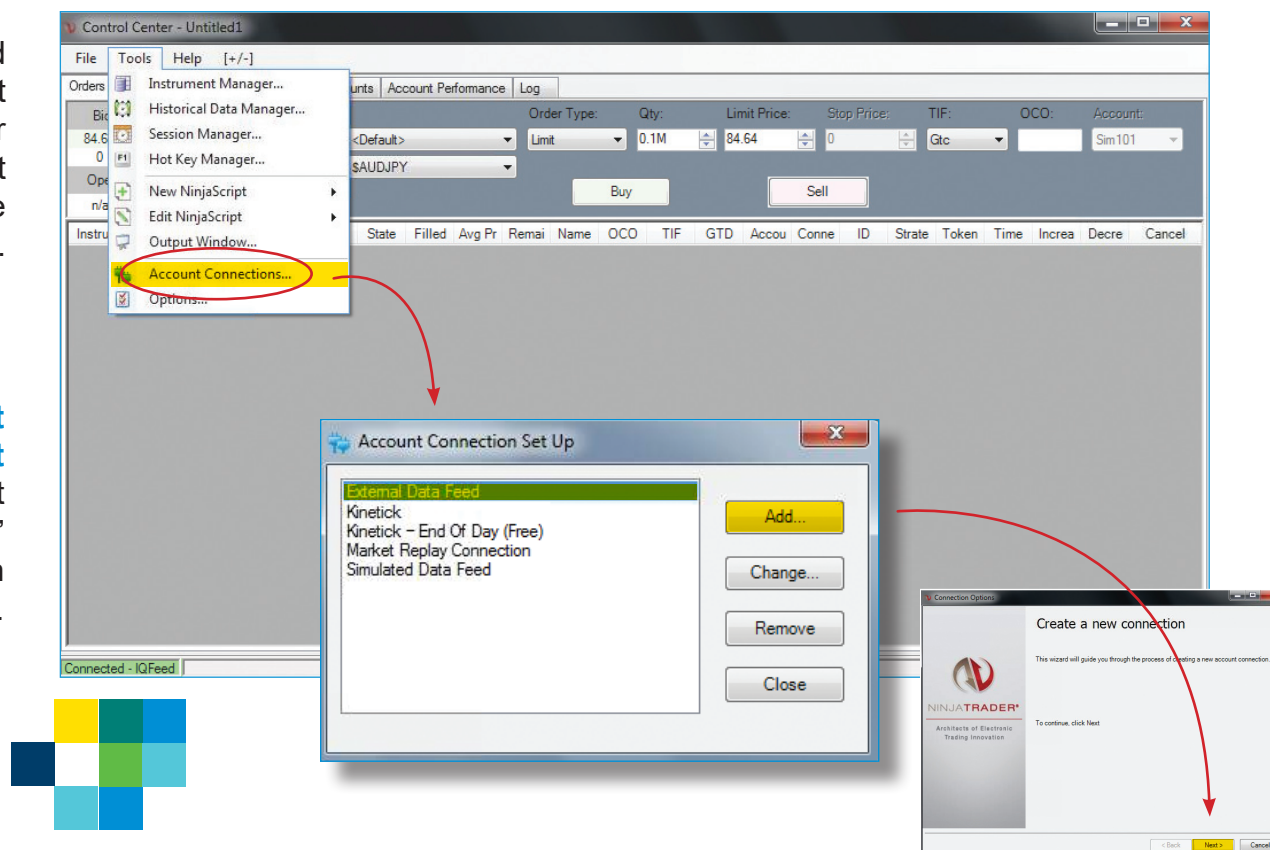
v050119

Connecting IQFeed with NinjaTrader 7

Please note that before you can run IQFeed with NinjaTrader 7, you will need to install the IQFeed client software. You can get the latest version from www.iqfeed.net. Once you have both IQFeed and NinjaTrader 7 installed, you can connect them using the following steps:

1 Open NinjaTrader 7 and click the **Tools** link at the top of the Ninja Trader Control Center window. Select **Account Connections** from the dropdown panel.

2 On the **Account Connection Set Up** window, select "External Data Feed" and click **Add....** Then click on **Next**.



3 On the **Connection Options** window, click **Next**. Type “IQFeed” in the Connection name field and select “IQFeed” from the Provider drop-down menu. You can leave **Backup** datafeed connection as **<None>**. You also have option of connecting on startup with IQFeed. Click on **Next** to continue.

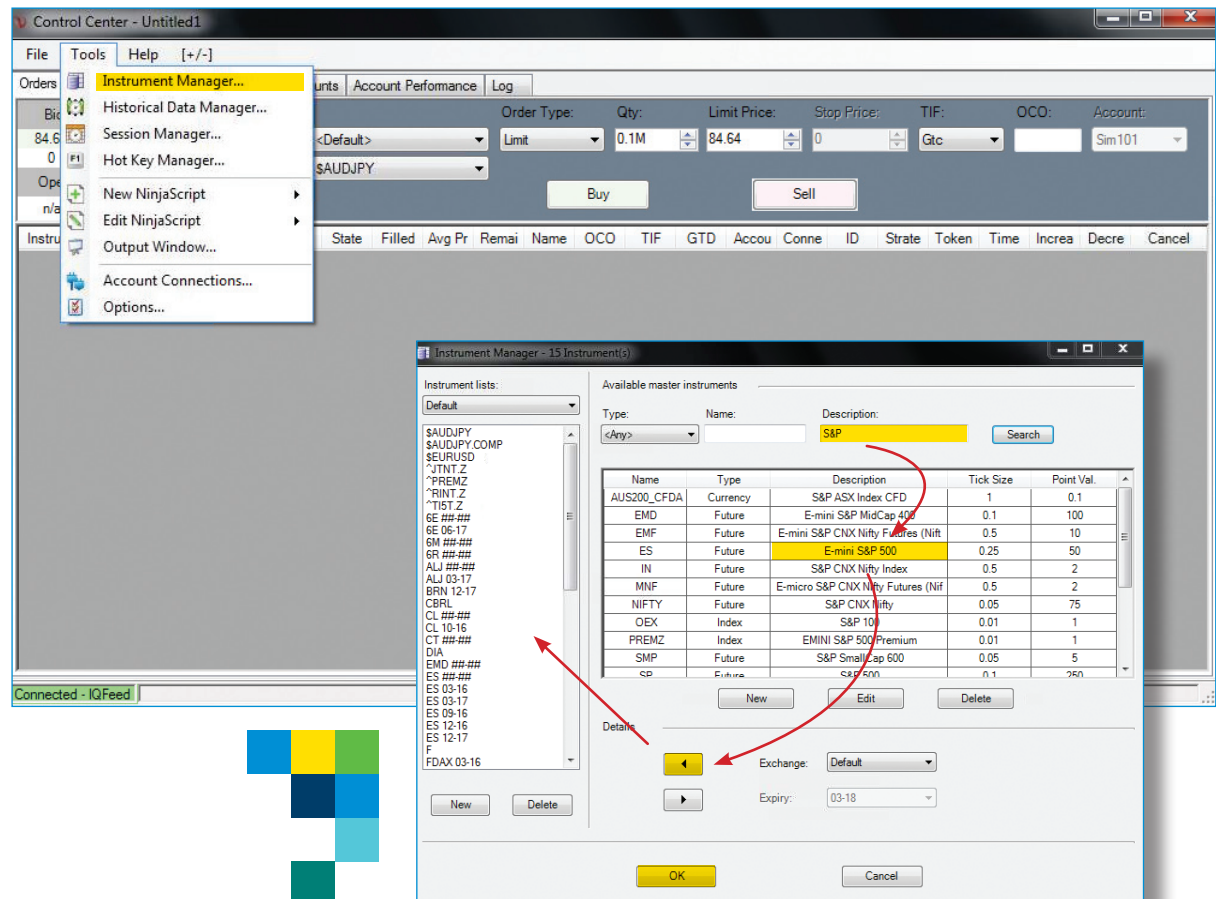
4 Enter the IQFeed login ID and password. The customer has the option of selecting to use back-adjusted data on this screen. Generally speaking, they should not select this option, as IQFeed has its own back-adjusted symbology. Click on **Next**.

5 Click **Finish** to complete the NinjaTrader connection with IQFeed. Once connected, the customer should see a green bar in the lower left corner of NinjaTrader that reads “Connected - IQFeed.”

Adding IQFeed Symbols to an Instrument List

NinjaTrader's symbology is different from IQFeed's or other data providers'. Many IQFeed symbols are recognized and mapped to their NinjaTrader counterparts when IQFeed is selected as the data source in NinjaTrader. This section explains how to add these symbols to an **Instrument List** in NinjaTrader. *(Note: the next section explains how to manually add unrecognized symbols.)*

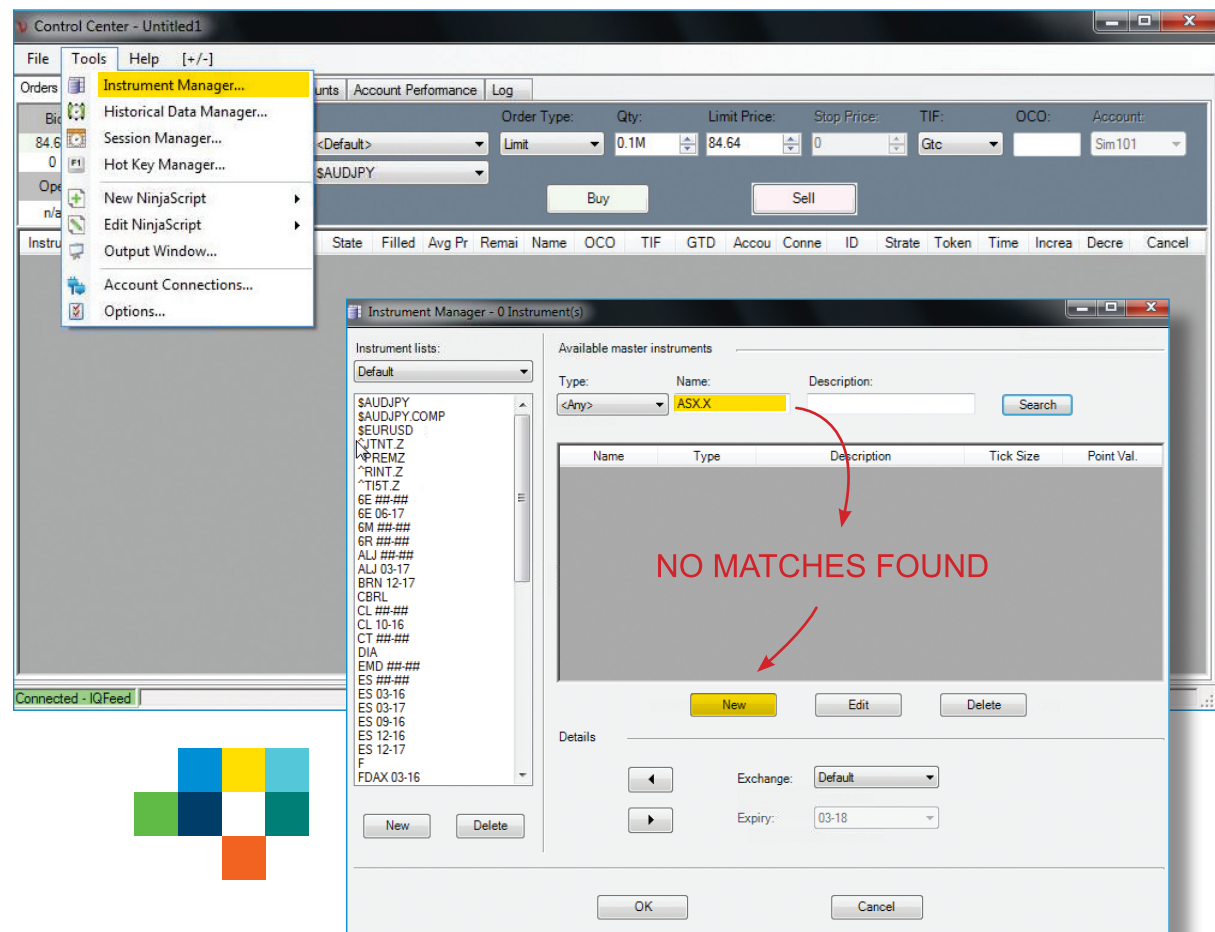
- 1 In NinjaTrader 7, click the **Tools** link at the top of the Control Center window. Select **Instrument Manager** from the dropdown window.
- 2 On the **Instrument Manager**, you can search for a symbol either by name or description. A list of potential matching symbols is displayed under the search criteria --click on the one you want and highlight it, then click on the left-pointing arrow at the bottom of the window to add the symbol to the NinjaTrader **Instrument List**. Once added, click **OK**, and the symbol should now be available to view in NinjaTrader.



Manually Adding Unrecognized IQFeed Symbols

If NinjaTrader does not recognize a particular IQFeed symbol (e.g. a DTN custom market indicator or a recently added symbol to an exchange), you can manually add it by following the steps below.

- 1 In NinjaTrader 7, click the **Tools** link at the top of the Control Center window. Select **Instrument Manager** from the dropdown window.
- 2 If you are unable to find a symbol using the search function on the **Instrument Manager**, NinjaTrader may not have the symbol in its database. To manually add a symbol, click on **New**.



3

On the **Instrument Editor** window:

a) Under the **Definition** tab, type the symbol name that you are adding in the **Master instrument** field; choose the **Instrument type**; and select the proper exchange from the **Exchanges** list. Optionally, you can add a description for this newly added symbol in the **Description** field.

b) Under the **Misc** tab, scroll down to the **Symbol map** section; type the IQFeed symbol* in the field to the right of IQFeed. Then, click **OK**.

4

Back on the **Instrument Manager** screen, you should now be able to select the symbol from **Available master instruments**. Click the left-pointing arrow at the bottom of the window to add the symbol to the **Instrument List**. Once added, click **OK**, and the symbol should now be available to view in NinjaTrader.

