



Help Guide

---

# Getting Started with NinjaTrader 8

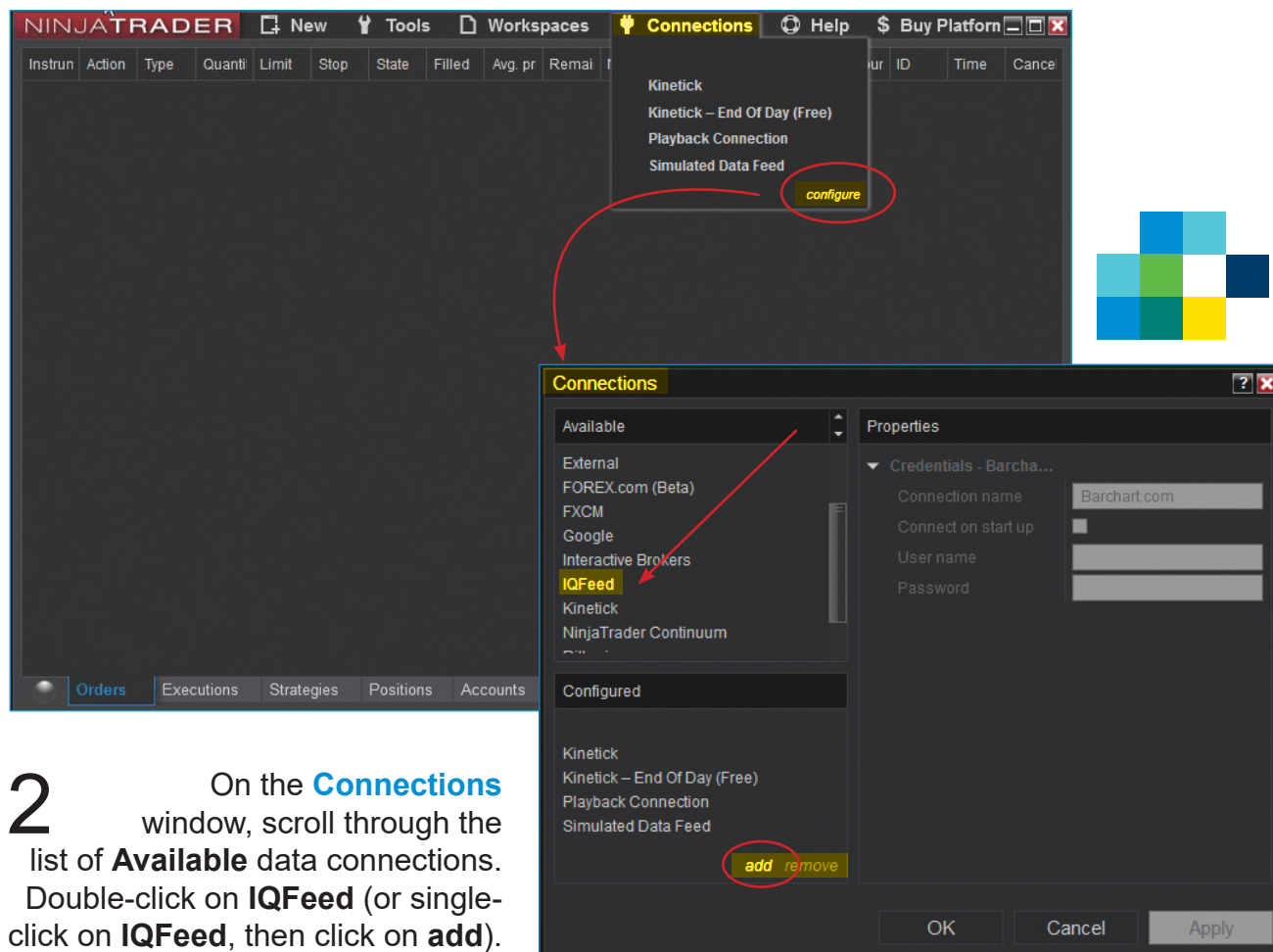
v043019



## Connecting IQFeed with NinjaTrader 8

Please note that before you can run IQFeed with NinjaTrader 8, you will need to install the IQFeed client software. You can get the latest version from [www.iqfeed.net](http://www.iqfeed.net). Once you have both IQFeed and NinjaTrader 8 installed, you can connect them using the following steps:

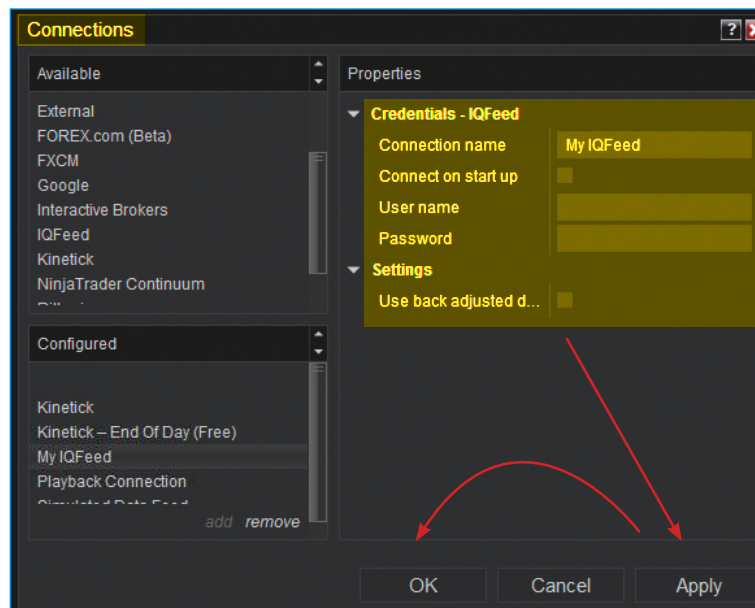
- 1 Open NinjaTrader 8 and click the **Connections** link at the top of the Ninja Trader Control Center window. Select **Configure** from the dropdown panel.



- 2 On the **Connections** window, scroll through the list of **Available** data connections. Double-click on **IQFeed** (or single-click on **IQFeed**, then click on **add**).

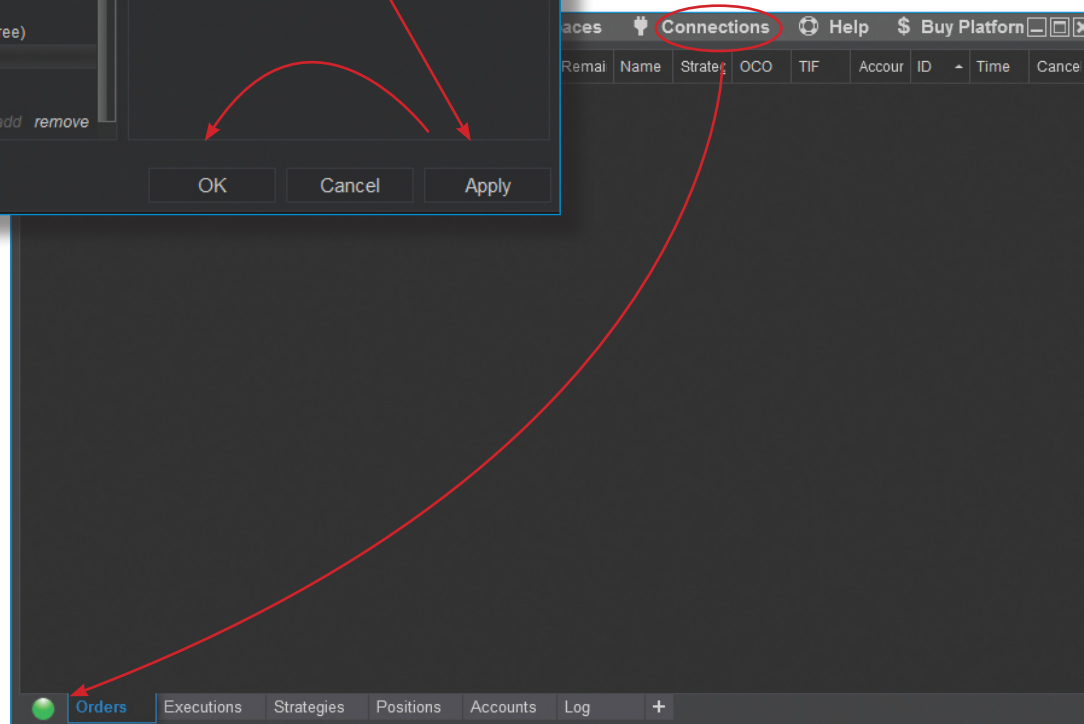


- On the **Connections** window, under **Properties**, enter "IQFeed" (or use the default name) in the **Connection name** field. Check the box for **Connect on Startup** if you wish to have IQFeed start when you launch NinjaTrader 8. Type your IQFeed user ID and password into the respective **User name** and **Password** fields. Do not check the box for **Use back adjusted data**.



- Click on **Apply** to save your IQFeed login credentials with NinjaTrader 8. Then click **OK** to complete the configuration setup.

- You will see a green indicator (●) at the bottom left of NinjaTrader 8 whenever you are connected to a data feed. If you don't see this, select the **Connections** tab at the top of NinjaTrader 8 and click on **IQFeed** (which should now be an option) to be connected.



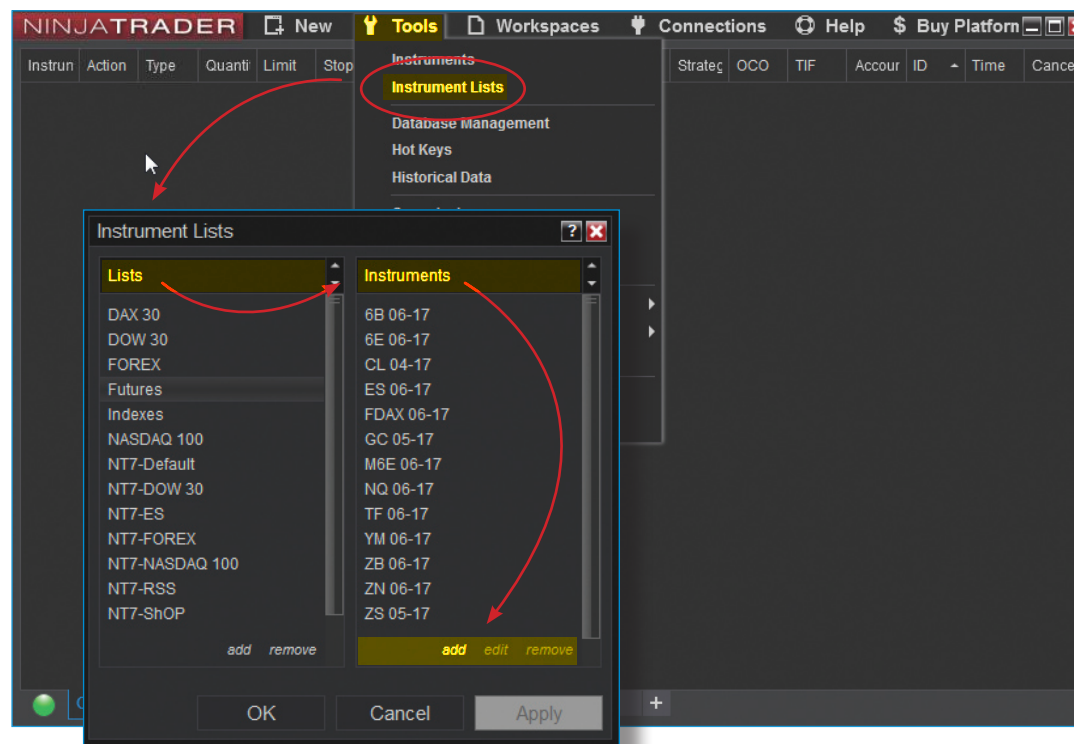



## Adding IQFeed Symbols to an Instrument List

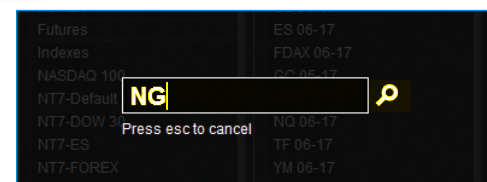
NinjaTrader's symbology, with the exception of equities, is different from IQFeed's or other data providers'. Many of our symbols are recognized and mapped to their NinjaTrader counterparts when IQFeed is selected as the data source in NinjaTrader. This section explains how to add these symbols to an **Instrument List** in NinjaTrader. (Note: the next section explains how to manually add unrecognized symbols.)

**1** In NinjaTrader 8, click the **Tools** link at the top of the Control Center window. Select **Instrument Lists** from the dropdown window.

**2** On the **Instrument Lists** window, select one of the pre-defined **Lists**, or you can **add** a new one. Under **Instruments**, you will see the symbols that are currently included in the selected List. To add a symbol to that list, click on **add** at the bottom of **Instruments**.

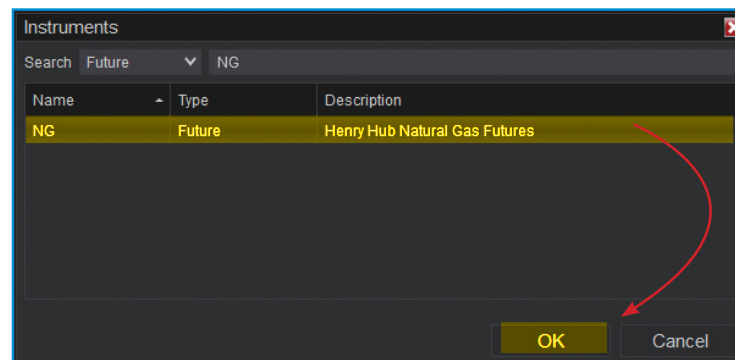


**3** On the search window, type either a root symbol or a partial description of what you are looking for. Then click the magnifying glass (  ).



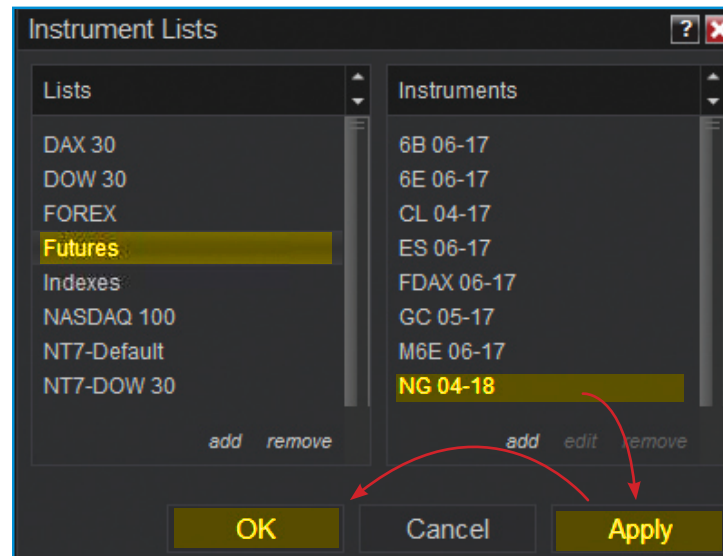


4 A list of search results will be presented on the **Instruments** window. You can use the symbol type dropdown to narrow your search. Select the symbol that you want and click **OK**.



5 On the **Instrument Lists** window, the symbol that you've added should now be included under **Instruments** of its specific **List**. If it is, click **Apply**, then **OK**.

Congratulations! You've just added a symbol to an **Instrument List** in NinjaTrader 8.

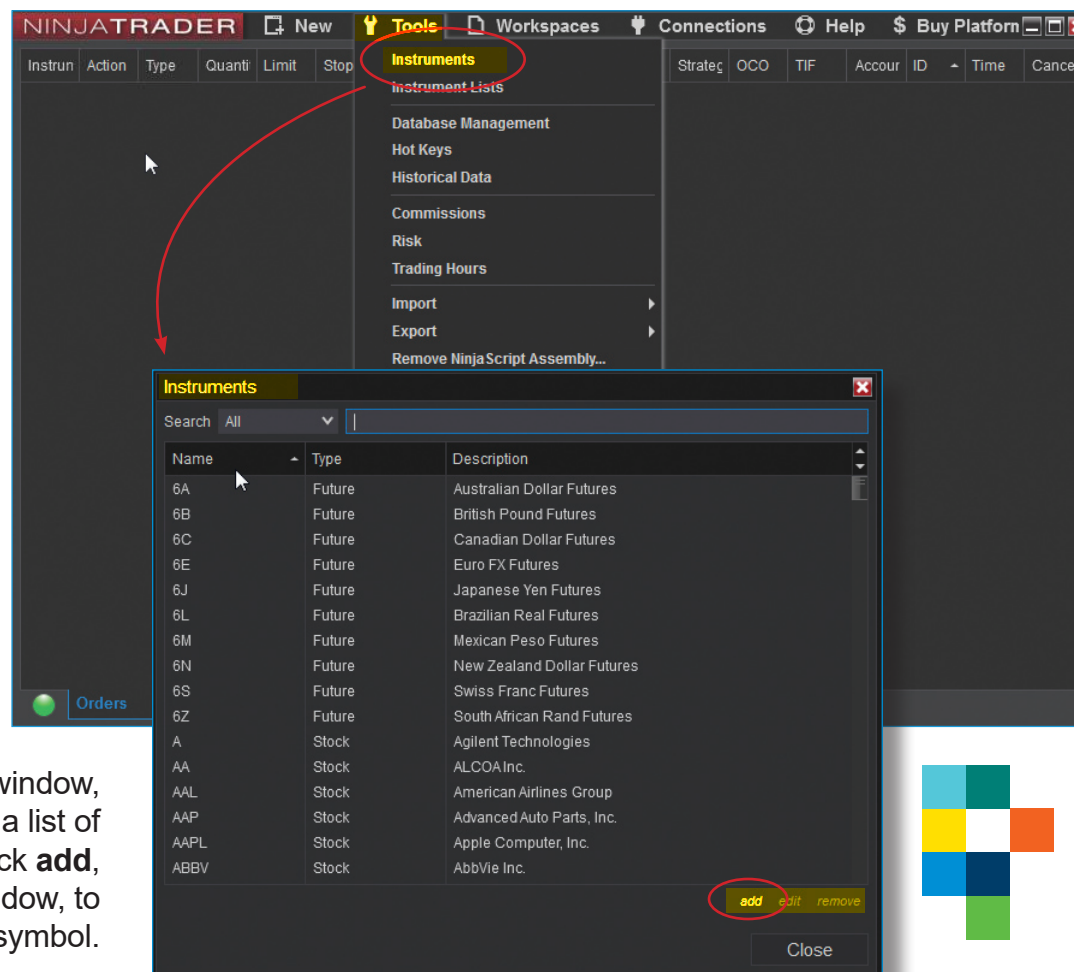




## Manually Adding Unrecognized IQFeed Symbols

If NinjaTrader does not recognize a particular IQFeed symbol (e.g. a DTN custom market indicator or a recently added symbol to an exchange), you can manually add it by following the steps below.

- 1 In NinjaTrader 8, click the **Tools** link at the top of the Control Center window. Select **Instruments** from the dropdown window.



- 2 On the **Instruments** window, NinjaTrader 8 shows a list of all recognized symbols. Click **add**, at the bottom right of this window, to begin adding a new symbol.



## 3

On the **Instrument** window:

a) Under **General**, type the symbol name that you are adding in the **Master instrument** field; choose the **Instrument type**; and select the proper exchange from the **Exchanges** list (if you're selecting a DTN symbol, choose **Default** as the exchange). Optionally, you may want to provide a **Description** for the symbol that you're adding.

b) Scroll down to the **Symbol Map** section, and type IQFeed's symbol in the field to the right of **IQFeed**. Then, click **OK**.

*Note: when manually adding a symbol, NinjaTrader 8 does not recognize the decimal (".") keystroke unless you use the ten-key number pad.*

Congratulations! You've manually added a symbol in NinjaTrader 8. You can now add the symbol to an instrument list by following the steps under **Adding IQFeed Symbols to an Instrument List**.