



Help Guide

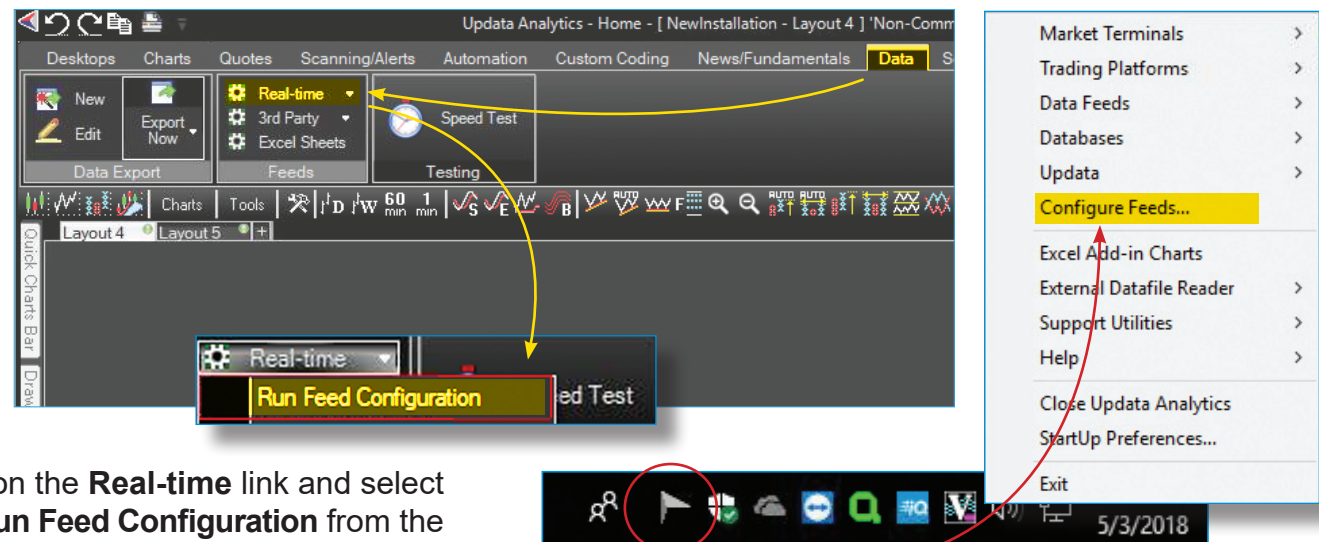
Getting Started with Udata


v50319

Connecting IQFeed with Udata

Please note that before you can run IQFeed with Udata, you will need to install the IQFeed client software. You can get the latest version from www.iqfeed.net. Once you have both IQFeed and Udata installed, you can connect them using the following steps:

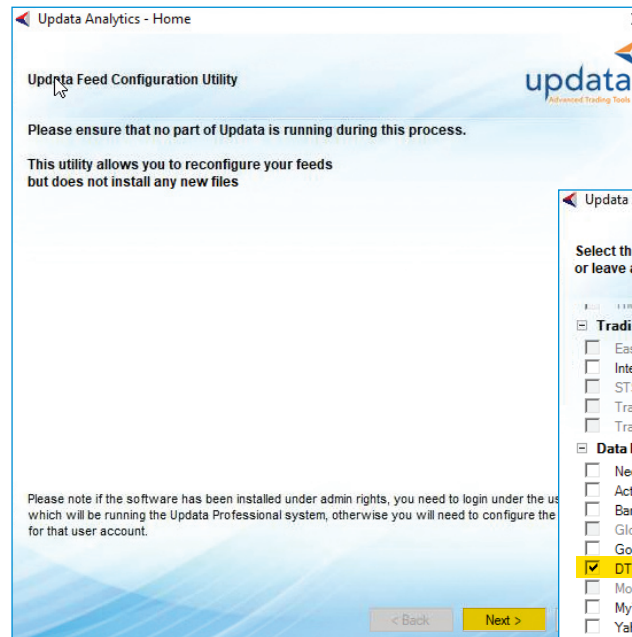
- 1 Open Udata on your PC and click on the **Data** tab at the top of the **Home** window.



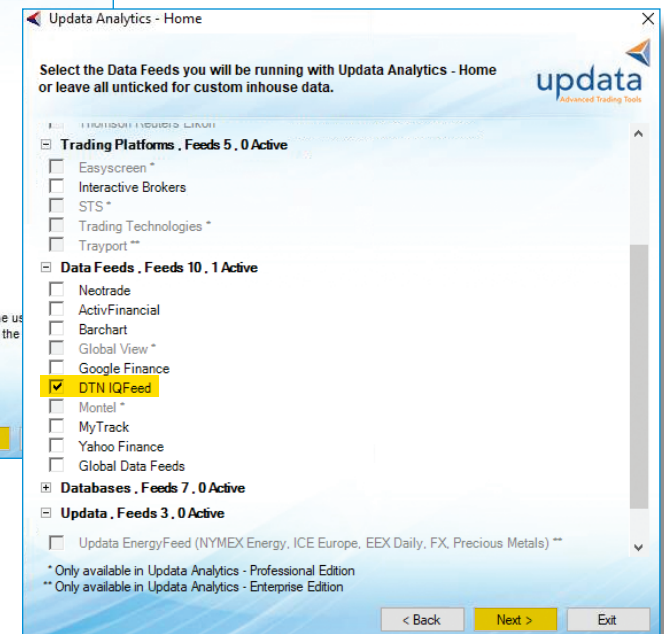
- 2 Click on the **Real-time** link and select **Run Feed Configuration** from the panel. (Alternately, you can click on the Udata Applications icon [] in your Windows system tray and select **Configure Feeds...**)



3 On the **Uputa Feed Configuration Utility** window, you will receive a warning that you cannot be running Uputa “during this process.” Close Uputa’s user interface (not the configuration utility). Then click on **Next**.



4 Under the **Data Feeds** category, check the box for DTN IQFeed. Click on **Next**.



- 5** In the **Username** field, type your IQFeed user ID. In the **Password** field, type your IQFeed password. Click on **Next**.

Update Analytics - Home

DTN IQFeed

Enter the details for your DTN IQFeed account

Username: 213570

Password: *****

< Back Next > Exit

- 6** Click **Finish** to complete the connection with IQFeed.

configured.

☒ Start Update Applications on Exit

< Back Finish Exit

Viewing a Chart in Udata

If you're new to Udata, here is a basic guide to using the charting function. For more detailed info, or for help with the many other functions of Udata, please contact Udata support.

1 Select **Charts** from the top of the Udata **Home** window, and click on the **New Chart** icon [] at the top left.

2 On the **Find Instrument for Chart** window, select the **Ticker** option and type the IQFeed symbol into the text field. Then press **Open**.

Note: Udata does not accept IQFeed symbols that include a hashtag (#), so replace that character with an apostrophe ('). For example, @ES# would become @ES' in Udata.

3 You should now see a chart for the symbol you requested. If you don't: check your connection to IQFeed; verify you are entering the correct symbol; and verify that you are permitted to view the data you are requesting. If you need help with these steps, please contact IQFeed support.

