

## IQFeed Users Guide

DTN IQFeed is a leader in providing reliable, fast data for superior trading and investing. With IQFeed, you receive streaming market data and news, deep historical information, and proprietary content, all of which can be analyzed through the tools included with the IQFeed installation or by way of dozens of third-party analytics software packages that have partnered with us. And for the developer, we offer our API to build your own application.

This user's guide will help you get started with IQFeed and will provide you with overviews and tutorials on several of the IQFeed apps. If you have any questions after reviewing this guide, please reach out to our sales or support staff. We're always happy to help.



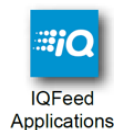
## Installation (Windows)

To run IQFeed on a PC, download the IQFeed client onto a computer running Windows 10 or greater.

1. Install the IQFeed client from the download page.



2. Once the IQfeed client has been downloaded, an icon entitled IQFeed Applications will appear on your Windows desktop. This folder houses a number of apps, such as "Charts" and "SnapQuote".



(Non-Windows)

IQFeed is a native Windows application. You must run it to use any features of IQFeed, including the IQFeed API. There is no Linux or Mac version of IQFeed client software, or any immediate plans to create one.

It is possible to launch IQFeed client software on other operating systems by using any technology that allows native Windows applications to run in a non-Windows operating system. The most popular is Wine, which is a compatibility layer. Other possibilities include a full Windows OS installation on your non-Windows machine, such as through BootCamp, or a virtualization, like Parallels. This is not an exhaustive list: any tool that purports to run Windows applications in a non-Windows operating system may be used.

If you run into technical issues with any third-party tool, the root of the issue may be beyond DTN's control. We will analyze any log files or error messages you get and provide all the information we can, but we can't do advanced troubleshooting on a third-party application.

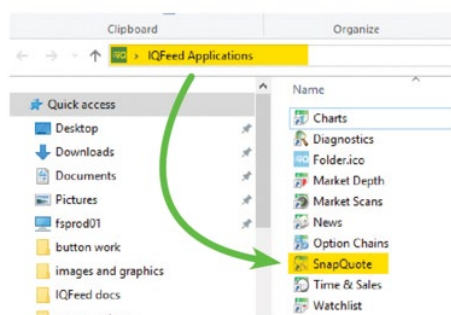
## How to Connect (Connecting with an IQFeed App)

After IQFeed is installed on your PC, you can test your connection using one of the apps found in the IQFeed Applications folder on your desktop. Here are the steps to connect, using the SnapQuote as an example.

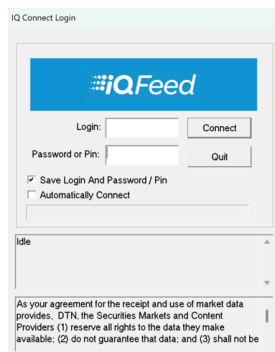
1. Double-click the IQFeed Applications shortcut icon on your PC desktop.



2. From the IQFeed Applications folder, select SnapQuote from the list.



- If this is your first attempt to connect with IQFeed, the IQFeed login window should appear. Enter your IQFeed login ID and password information. To avoid having to enter your login and password every time, you may want to check the box to "Save Login and Password/Pin". Check "Automatically Connect" to automatically sign in whenever you start IQFeed. After you've made your selections, click "Connect".



IQ Connect Login

**IQFeed**

Login:  Connect

Password or Pin:  Quit

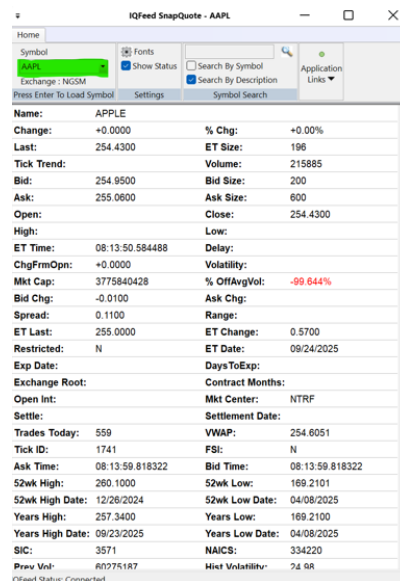
☒ Save Login And Password / Pin

☐ Automatically Connect

Idle

As your agreement for the receipt and use of market data provides, DTN, the Securities Markets and Content Providers (1) reserve all rights to the data they make available; (2) do not guarantee that data; and (3) shall not be

- The IQFeed SnapQuote window should open. Type a symbol that you are permitted to see into the open field at the top of the window, and press Enter on your keyboard. For example, try AAPL (or if you are a Forex-only customer, enter EURUSD.FXCM). Streaming data should be displayed. If not, please contact IQFeed customer service.



IQFeed SnapQuote - AAPL

Home

Symbol:  Search By Symbol

Exchange: NCCOM

Press Enter To Load Symbol

Settings

Symbol Search

Application Links

Name:	APPLE	
Change:	+0.0000	% Chg: +0.00%
Last:	254.4300	ET Size: 198
Tick Trend:		Volume: 215885
Bid:	254.9500	Bid Size: 200
Ask:	255.0600	Ask Size: 600
Open:		Close: 254.4300
High:		Low:
ET Time:	08:13:50.584488	Delay:
ChgFrmOpen:	+0.0000	Volatility:
Mkt Cap:	3775840428	% OffAvgVol: -99.644%
Bid Chg:	-0.0100	Ask Chg:
Spread:	0.1100	Range:
ET Last:	255.0000	ET Change: 0.5700
Restricted:	N	ET Date: 09/24/2025
Exp Date:		DaysToExp:
Exchange Root:		Contract Months:
Open Int:		Mkt Center: NTRF
Settle:		Settlement Date:
Trades Today:	559	VWAP: 254.6051
Tick ID:	1741	FSI: N
Ask Time:	08:13:59.818322	Bid Time: 08:13:59.818322
52wk High:	260.1000	52wk Low: 169.2101
52wk High Date:	12/26/2024	52wk Low Date: 04/08/2025
Years High:	257.3400	Years Low: 169.2100
Years High Date:	09/23/2025	Years Low Date: 04/08/2025
SIC:	3571	NAICS: 334220
Prev Vol:	60775187	Hist Volatility: 74.08

QFeed Status: Connected

- Once connected to IQFeed, the IQFeed Connection Manager will appear as a square blue icon in your Windows System Tray (you may have to click on the “show hidden icons” arrow to see it). Double-clicking this icon will provide you with details about your IQFeed connection.



## Connecting with a 3rd Party Software

The IQFeed client includes a few basic data apps, but to get the most out of IQFeed, you will want to connect to an analytics software. After installing IQFeed, you should be able to simply select IQFeed as your data source within your 3rd party platform. Follow the steps below:

- Launch your 3rd party software (e.g. NinjaTrader, Multicharts, QCollector) on your computer.



- Follow the instructions provided by your 3rd party software for selecting and connecting to a data feed.
- Once connected to IQFeed, the IQFeed Connection Manager will appear as a square blue icon in your Windows System Tray (you may have to click on the “show hidden icons” arrow to see it). Double-clicking on this IQ icon will provide you with details about your IQFeed connection.



## IQFeed Connection Manager

When IQFeed is running on your computer, a small blue “IQ” icon will appear in your system tray (on a PC, you may have to click on "Show hidden icons" to see it). This is the IQFeed Connection Manager, which provides details of your connection with IQFeed as well as quick accessibility to the various IQFeed apps and diagnostic tools.

Double-clicking the icon will open the IQFeed Connection Manager window. Right-clicking the icon will display a small panel of quick-access options.

