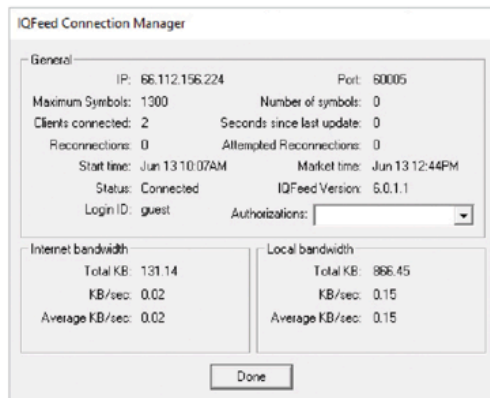


The IQFeed Connection Manager



Feed Stats Window

The following information is provided on the IQFeed Connection Manager Feed Stats window.

IP: this is the primary IQFeed server that is currently connected. This address can change with each reconnection to IQFeed and is based on server activity.

Port: the primary port on your PC that is currently being used to communicate with IQFeed.

Maximum Symbols: the maximum number of symbols that you can view simultaneously under your current subscription. The default number is 500, but is upgradeable to a maximum of 2,500.

Number of symbols: the number of unique symbols you are currently viewing simultaneously through IQFeed. If this number is

Attempted Reconnections: the number of times that IQFeed has attempted to reconnect, but failed, on your computer since you last initiated a connection. A large number here could be a strong indication of an internet connection problem.

Start time: the time you last connected to IQFeed on your PC.

Market time: the current time of the market. All market data is displayed through IQFeed as Eastern Standard Time (EST).

Status: this informs you of your connection status.

IQFeed Version: the version of IQFeed you are currently running.

ever equal to the number under Maximum Symbols, any additional symbol that you try to access will not be available.

Clients connected: every connection with IQFeed on your PC. This includes any 3rd party app as well as any IQFeed app that is running.

Seconds since last update: the number of seconds since the last update from the quote server.

Reconnections: the number of times that IQFeed has reconnected on your computer since you last initiated a connection through one of the IQFeed apps or through another software application.

Login ID: the IQFeed user ID that is currently logged in on this PC.

Authorizations: the authorizations for the current Login ID.

Internet bandwidth*: the amount of level 1 streaming data* that is currently being transferred through the internet from our servers to your machine.

Local bandwidth*: the amount of level 1 streaming data that is currently being transferred locally from IQConnect to the application you are using.

* No history, news, or depth of market data is included in internet bandwidth or local bandwidth.

Quick Access Window

Open an app, by right-clicking on the IQFeed Connection Manager icon in your system tray

Start Feed: This is used to restart IQFeed after it has been stopped.

Stop Feed: Use this to disconnect from IQFeed without closing your connection to the IQFeed Connection Manager.

Display Apps: This links to all of the data apps that are included with IQFeed. There is also a link to creating or managing a workspace. More information about the IQFeed apps and

Support: Includes IQFeed support links and troubleshooting tools.

- **IQFeed.net** - Professional futures, equities, options and forex data : This will connect you to our Home, Downloads, or Contact Us page.
- **Launch Diagnostics:** Click this to launch the IQFeed Diagnostics Utility, which provides information pertaining to your IQFeed connection and

workspaces can be found in the IQFeed Apps section and Creating a Workspace section, respectively, of this document.

Configuration: Configure data and set feed options.

- **Trader Account Verification:**

Select this to validate for the CME Group Globex data through Interactive Brokers.

- **Usage Statistics:** Choose whether to report usage statistics with your IQFeed user ID or anonymously.

- **Auto Connect:** Toggle the auto-connection for IQFeed.

- **Data Queue Monitoring:**
Monitor the data queue on your PC (level 1 data only). With this activated, you will receive a pop-up notification in the system tray if a software/application is not keeping up with the feed.

your PC. and includes troubleshooting tools for connectivity.

- **Open IQFeed Directory:** This will take you to the install directory for IQFeed. By default, the location is: C: > program Files (x86) > DTN > IQFeed.

- **Open IQFeed Log Directory:**
This will take you to the IQFeed log directory, which includes a general log file as well as crash logs for charts and news. By default, the location is: Documents > DTN > IQFeed.

- **Go to IQFeed Download page:**
This will take you to the IQFeed download page, where you can install the latest version of IQFeed.

Feed Stats: Click this to bring up the IQFeed Connection Manager Window.

Exit: Disconnect from IQFeed.